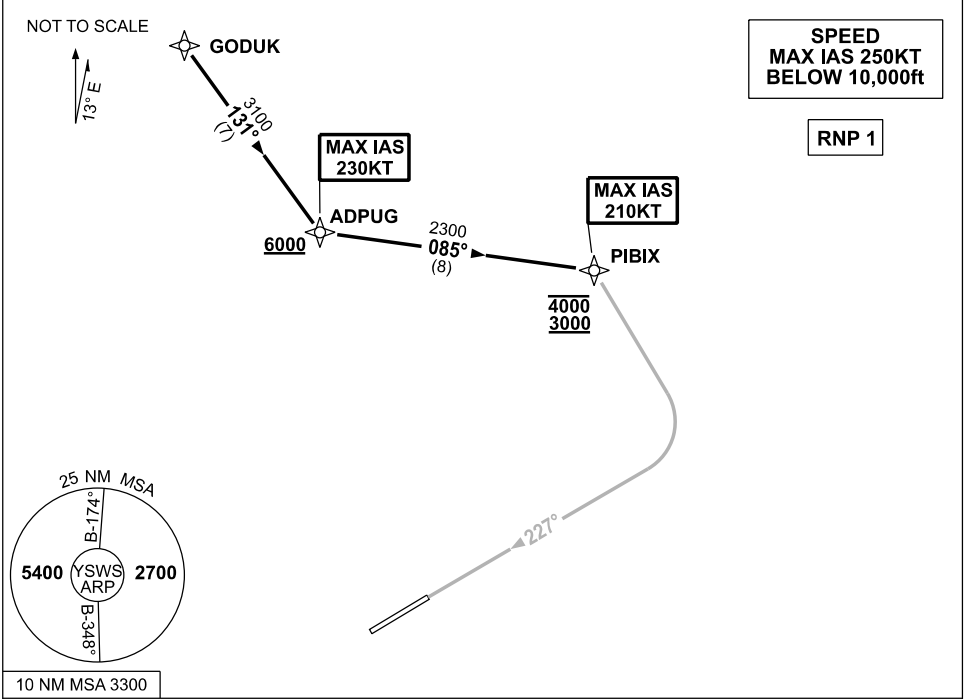


**STANDARD INSTRUMENT ARRIVAL (STAR)  
RWY 23 GODUK ONE NOVEMBER ARRIVAL (RNAV)  
SYDNEY/NANCY-BIRD WALTON, NSW (YSWS)**

**09 JUL 2026**

ATIS <b>127.0</b>	APP <b>119.35</b>	TWR <b>128.1</b>	SMC <b>124.05</b>		Bearings are Magnetic Elevations in FEET AMSL
----------------------	----------------------	---------------------	----------------------	--	--------------------------------------------------



**ARRIVAL: GODUK ONE NOVEMBER**

**RWY 23:**

- From GODUK, track 131° to ADPUG  
**Cross ADPUG AT or ABV 6000ft**  
MAX IAS 230KT from ADPUG
- Turn LEFT track 085° to PIBIX for ILS, RNP X (AR), RNP Z or LOC RWY 23 approach,  
**Cross PIBIX BTN 3000ft to 4000ft**  
MAX IAS 210KT from PIBIX

**COMMUNICATIONS FAILURE: PROCEDURE IN IMC  
IF ABLE CTC SY APP +61 2 9556 6515**

- Squawk 7600, comply with vertical navigation requirements, but not below MSA.
- Track via the latest STAR clearance to the nominated runway, then fly the most suitable approach in accordance with ERS A EMERG Section 1.5.

Changes: NEW PROCEDURE.

SWSSR02-187