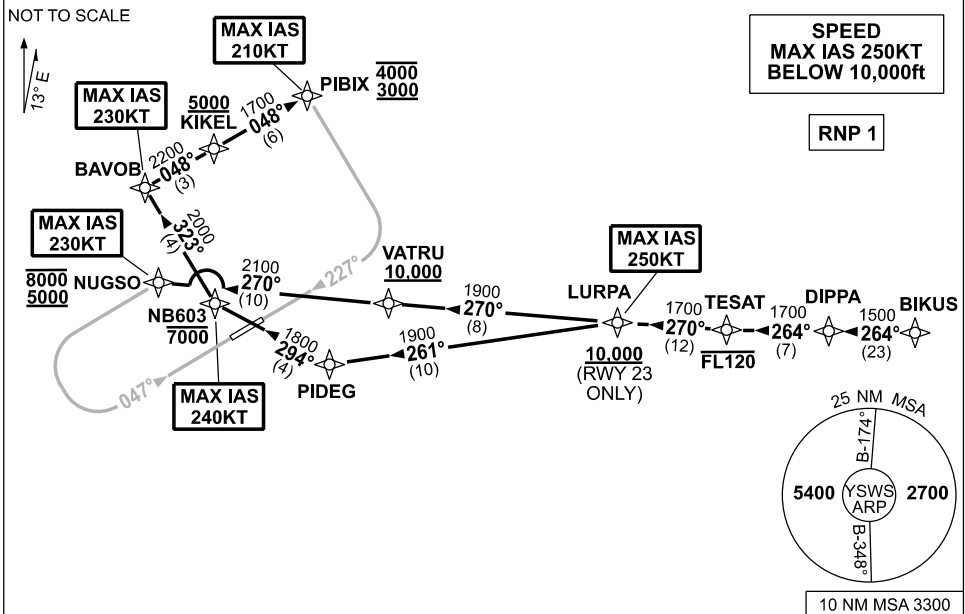


**STANDARD INSTRUMENT ARRIVAL (STAR)
BIKUS ONE ALPHA ARRIVAL (RNAV)
SYDNEY/NANCY-BIRD WALTON, NSW (YSWS)**

09 JUL 2026

ATIS 127.0	APP 124.4 119.35	TWR 128.1	SMC 124.05		Bearings are Magnetic Elevations in FEET AMSL
---------------	---------------------	--------------	---------------	--	--



ARRIVAL: BIKUS ONE ALPHA

RWY 05:

- From BIKUS track 264° to DIPPA
- Track 264° to TESAT
Cross TESAT AT or BLW FL120
- Turn **RIGHT** track 270° to LURPA
MAX IAS 250KT from LURPA
- Track 270° to VATRU
Cross VATRU AT or ABV 10000ft
- Track 270° to NUGSO for ILS, RNP X (AR), RNP Z, or LOC RWY 05 approach.
Cross NUGSO BTN 5000ft and 8000ft
MAX IAS 230KT from NUGSO

RWY 23:

- From BIKUS track 264° to DIPPA
- Track 264° to TESAT
Cross TESAT AT or BLW FL120
- Turn **RIGHT** track 270° to LURPA
MAX IAS 250KT from LURPA
- Turn **LEFT** track 261° to PIDEG
- Turn **RIGHT** track 294° to NB603
Cross NB603 AT or BLW 7000ft
MAX IAS 240KT from NB603
- Turn **RIGHT** track 323° to BAVOB
MAX IAS 230KT from BAVOB
- Turn **RIGHT** track 048° to KIKEL
Cross KIKEL AT or ABV 5000ft
- Track 048° to PIBIX for ILS, RNP X (AR), RNP Z or LOC RWY 23 approach
Cross PIBIX BTN 3000ft and 4000ft
MAX IAS 210KT from PIBIX

**COMMUNICATIONS FAILURE: PROCEDURE IN IMC
IF ABLE CTC SY APP +61 2 9556 6515**

- Squawk 7600, comply with vertical navigation requirements, but not below MSA.
- Track via the latest STAR clearance to the nominated runway, then fly the most suitable approach in accordance with ERS A EMERG Section 1.5.

Changes: NEW PROCEDURE.

SWSSR01-187