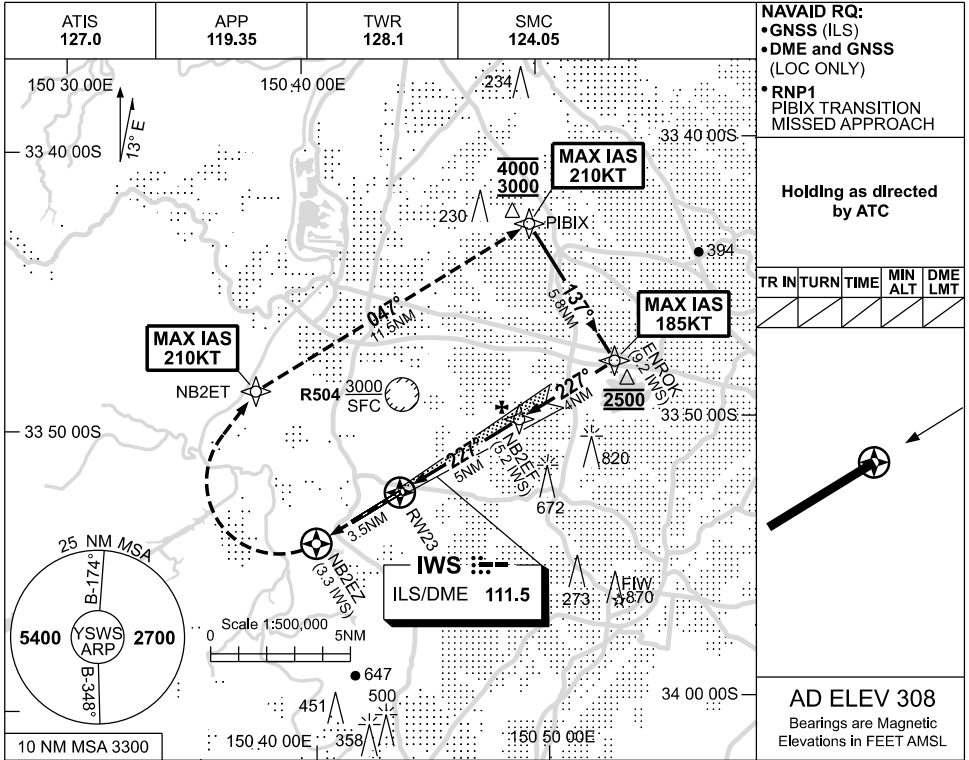


USE QNH

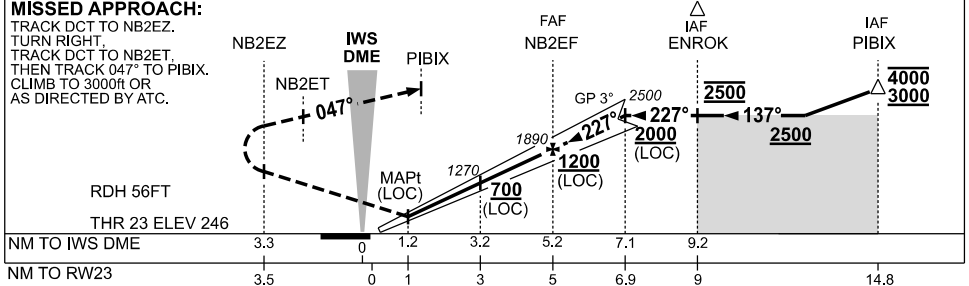
ILS or LOC RWY 23

09 JUL 2026

SYDNEY/NANCY-BIRD WALTON, NSW (YSWS)



NM TO IWS DME	0.9	1.4	2	3.2	4	5	NB2EF	6	7.1			
ALT (3° APCH PATH)	546	710	890	1270	1530	1850	1890	2160	2500			



CATEGORY	A	B	C	D/D _L
S-I ILS	546 (300) 0.9	900 RVR (VIS 0.8	550 RVR WITH ACTUAL QNH)	
S-I LOC	710 (464-1.9)	(VIS 1.3 WITH ACTUAL QNH)		
CIRCLING	NOT AUTHORISED			
ALTERNATE	(1112-4.4)		(1402-6.0)	(1532-7.0)

1. MAX IAS:
PIBIX : 210KT
ENROK : 185KT
MISS APCH : 210KT

Changes: NEW PROCEDURE.

SWII02-187