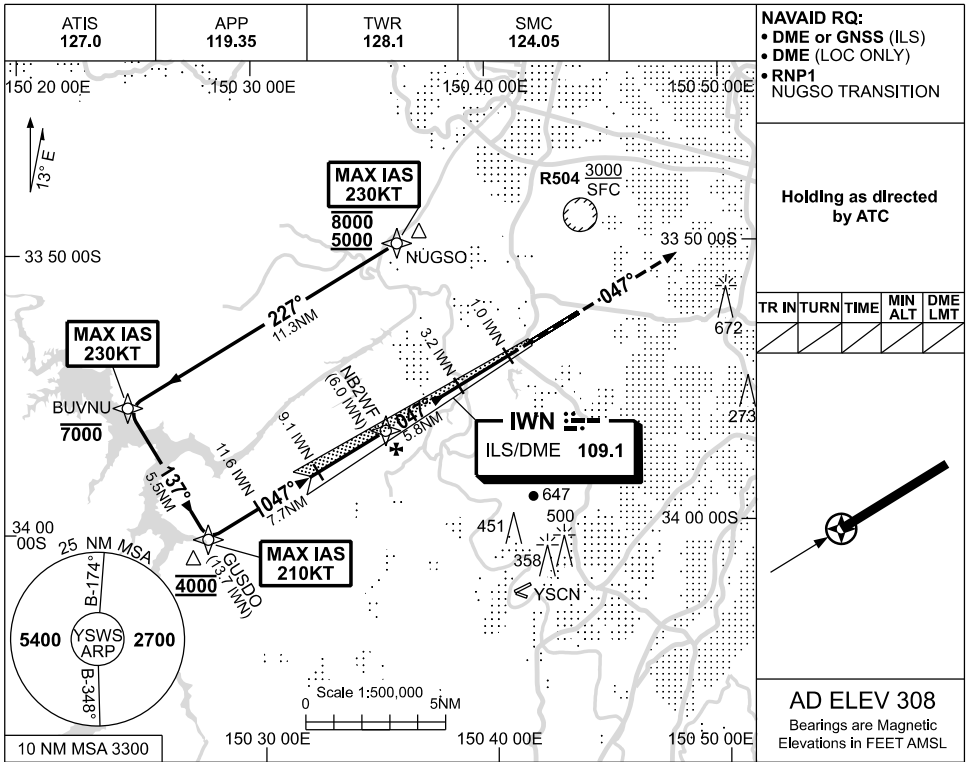


USE QNH

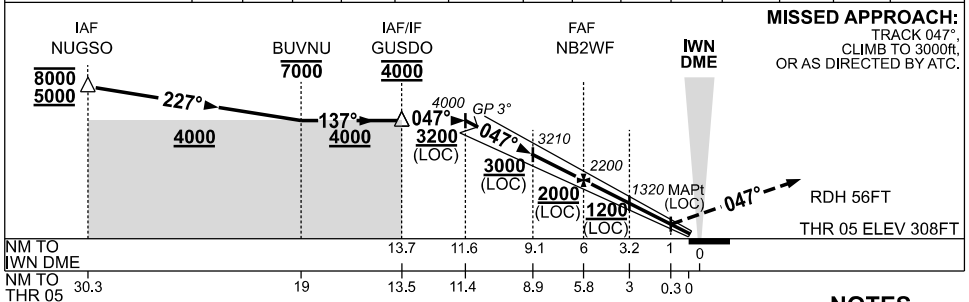
ILS or LOC RWY 05

09 JUL 2026

SYDNEY/NANCY-BIRD WALTON, NSW (YSWS)



NM TO IWN DME	11.6	10	9.1	8	7	NB2WF	5	4	3.2	2	1.4	1		
ALT (3° APCH PATH)	4000	3480	3210	2850	2530	2200	1890	1570	1320	940	790	608		



MISSED APPROACH:
TRACK 047°
CLIMB TO 3000ft.
OR AS DIRECTED BY ATC.

NM TO IWN DME	30.3	19	13.5	11.4	8.9	5.8	3	0.3	0
NM TO THR 05	30.3	19	13.5	11.4	8.9	5.8	3	0.3	0

NOTES

- MAX IAS: 230KT
NUGSO : 230KT
BUVNU : 230KT
GUSDO : 210KT

CATEGORY	A	B	C	D/D _L
S-I ILS	608 (300) 0.9	900 RVR (VIS 0.8)	550 RVR WITH ACTUAL QNH)	
S-I LOC	790 (482-2.0)	(VIS 1.4 WITH ACTUAL QNH)		
CIRCLING	NOT AUTHORISED			
ALTERNATE	(1112-4.4)	(1402-6.0)	(1532-7.0)	

Changes: NEW PROCEDURE.

SWSI101-187