

# STANDARD INSTRUMENT DEPARTURES (SID) KAMBA ONE NOVEMBER (NON-JET) (RNAV) SYDNEY/NANCY-BIRD WALTON, NSW (YSWS)

09 JUL 2026

|                      |                      |                      |                     |                     |  |
|----------------------|----------------------|----------------------|---------------------|---------------------|--|
| ATIS<br><b>127.0</b> | ACD<br><b>118.65</b> | SMC<br><b>124.05</b> | TWR<br><b>128.1</b> | DEP<br><b>118.4</b> | Bearings are Magnetic<br>Elevations in FEET AMSL |
|----------------------|----------------------|----------------------|---------------------|---------------------|--|

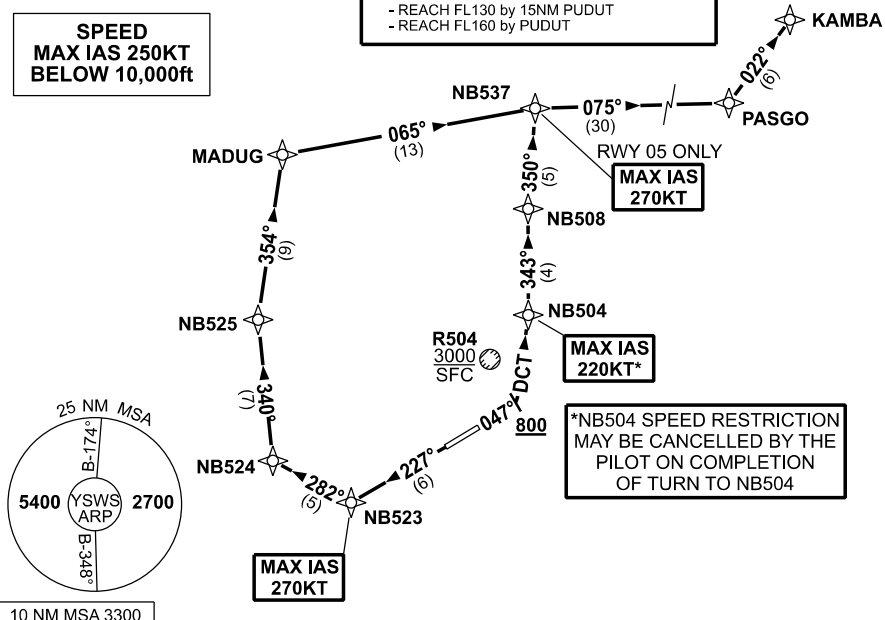
NOT TO SCALE

**RNP 1**

**SPECIAL REQUIREMENT**

FOR ACFT CLEARED VIA WLM AT or ABV FL130  
 - REACH FL130 by 31NM WLM NDB  
 FOR ACFT CLEARED VIA PUDUT-MATLA AT or ABV FL130  
 - REACH FL130 by 15NM PUDUT  
 - REACH FL160 by PUDUT

**SPEED  
MAX IAS 250KT  
BELOW 10,000ft**



**KAMBA ONE NOVEMBER**

**RWY 05**

- GRAD 4.1% to 700ft, then 3.3%
- \*MAX IAS 220KT until NB504
- Track 047°
- AT or ABV 800ft, turn LEFT and track DCT to NB504
- MAX IAS 270KT until NB537
- Track 343° to NB508
- Turn RIGHT, track 350° to NB537
- Turn RIGHT, track 075° to PASGO
- Turn LEFT, track 022° to KAMBA
- See SPECIAL REQUIREMENT above

**RWY 23**

- GRAD 4.0% to 800ft, then 3.3%
- MAX IAS 270KT until NB523
- Track 227° to NB523
- Turn RIGHT, track 282° to NB524
- Turn RIGHT, track 340° to NB525
- Turn RIGHT, track 354° to MADUG
- Turn RIGHT, track 065° to NB537
- Turn RIGHT, track 075° to PASGO
- Turn LEFT, track 022° to KAMBA
- See SPECIAL REQUIREMENT above

Changes: NEW PROCEDURE.

SWSDP24-187