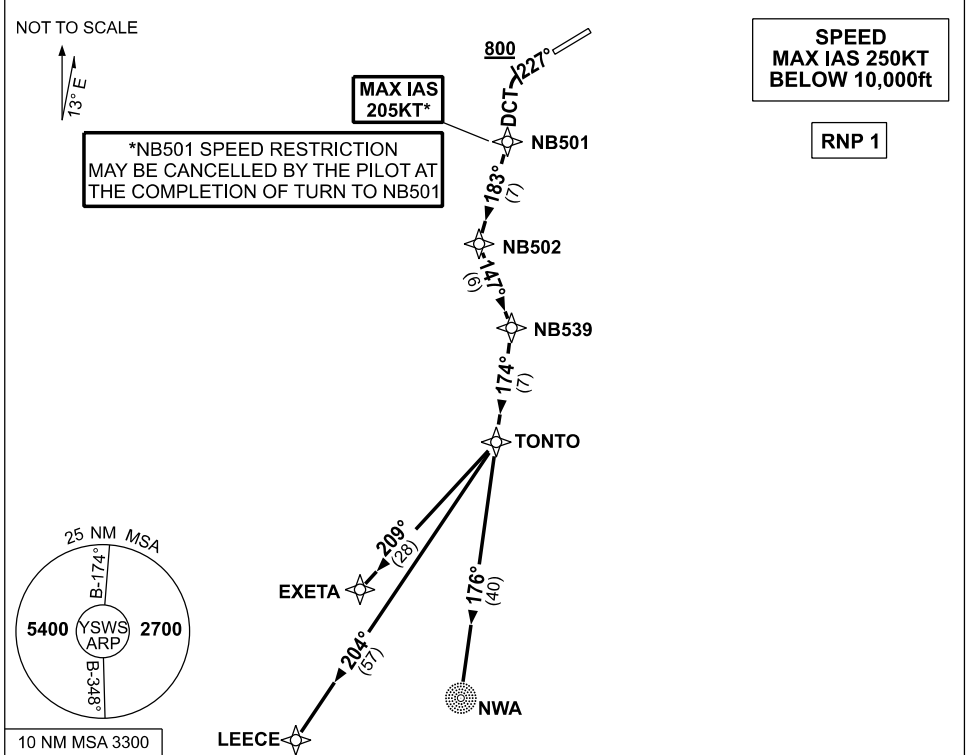


**STANDARD INSTRUMENT DEPARTURES (SID)  
RWY 23 TONTO ONE QUEBEC (RNAV)  
SYDNEY/NANCY-BIRD WALTON, NSW (YSWS)**

**09 JUL 2026**

ATIS 127.0	ACD 118.65	SMC 124.05	TWR 128.1	DEP 118.4	Bearings are Magnetic Elevations in FEET AMSL
---------------	---------------	---------------	--------------	--------------	--



**TONTO ONE QUEBEC  
RWY 23**

GRAD 6.5% to 800ft, then 3.3% (6.2% to 8000ft)  
\*MAX IAS 205KT until NB501

- Track 227°, AT or ABV 800ft turn LEFT and track DCT to NB501
- Track 183° to NB502
- Turn LEFT, track 147° to NB539
- Turn RIGHT, track 174° to TONTO

**TRANSITIONS:**

**NOWRA (NWA)** • From TONTO, turn RIGHT, track 176° to NWA NDB

**LEECE** • From TONTO, turn RIGHT, track 204° to LEECE

**EXETA** • From TONTO, turn RIGHT, track 209° to EXETA

Changes: NEW PROCEDURE. SWSDP23-187