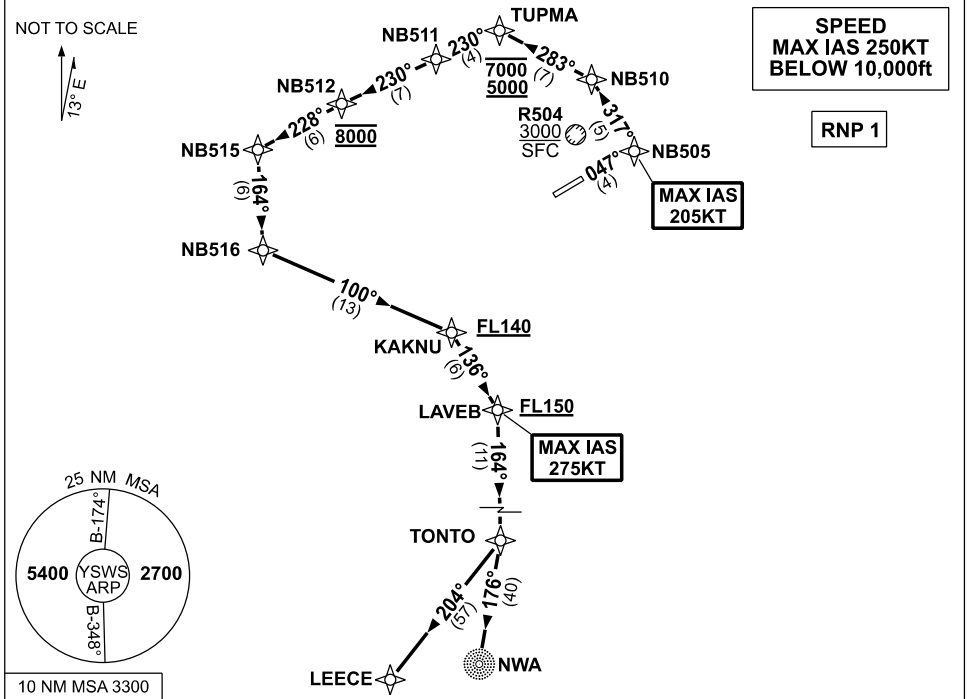


**STANDARD INSTRUMENT DEPARTURES (SID)
RWY 05 TONTO ONE HOTEL (RNAV)
SYDNEY/NANCY-BIRD WALTON, NSW (YSWS)**

09 JUL 2026

ATIS 127.0	ACD 118.65	SMC 124.05	TWR 128.1	DEP 118.4	Bearings are Magnetic Elevations in FEET AMSL
----------------------	----------------------	----------------------	---------------------	---------------------	--



**TONTO ONE HOTEL
RWY 05**

- GRAD 6.8% to 700ft, then 3.3%
- MAX IAS 205KT until NB505
- Track 047° to NB505
- MAX IAS 275KT until LAVEB
- Turn LEFT, track 317° to NB510
- Turn LEFT, track 283° to TUPMA
- Cross** TUPMA between 5000ft and 7000ft
(RQ GRAD to TUPMA: 5.5%)
- Turn LEFT, track 230° to NB511
- Track 230° to NB512
- Cross** NB512 AT 8000ft
(RQ GRAD TO NB512: 4.7% FM TUPMA)
- Turn LEFT, track 228° to NB515
- Turn LEFT, track 164° to NB516
- Turn LEFT, track 100° to KAKNU
- Cross** KAKNU AT or ABV FL140
(RQ GRAD to KAKNU: 4.3% FM NB512)
- Turn RIGHT, track 136° to LAVEB
- Cross** LAVEB AT or ABV FL150
- Turn RIGHT, track 164° to TONTO

TRANSITIONS:

- NOWRA (NWA)** • From TONTO, turn RIGHT, track 176° to NWA NDB
- LEECE** • From TONTO, turn RIGHT, track 204° to LEECE

Changes: NEW PROCEDURE.

SWSDP22-187