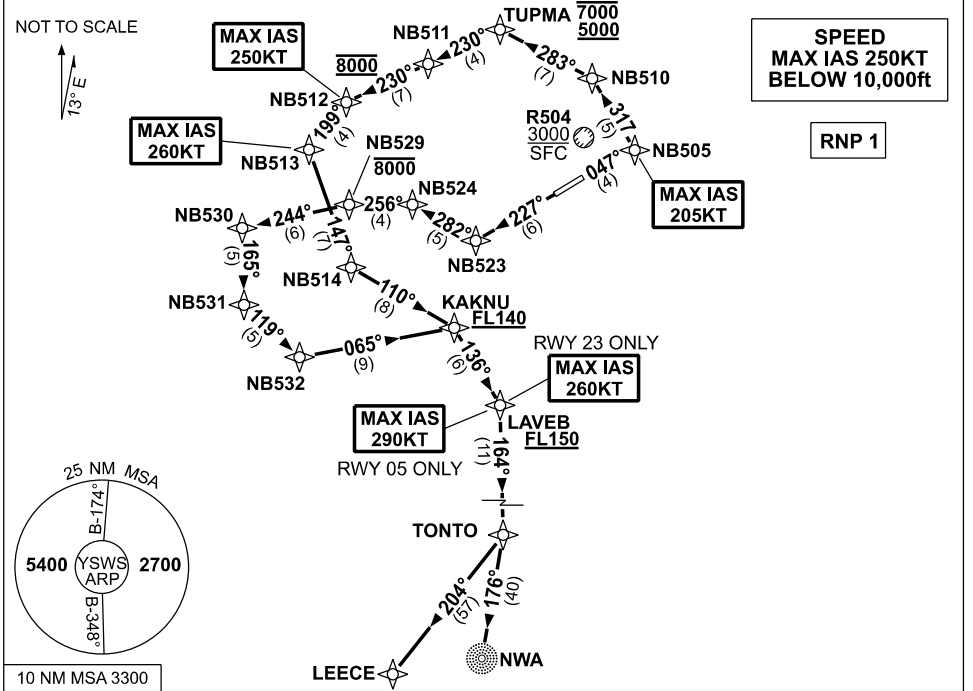


**STANDARD INSTRUMENT DEPARTURES (SID)
 TONTO ONE DELTA (RNAV)
 SYDNEY/NANCY-BIRD WALTON, NSW (ASWS)**

09 JUL 2026

ATIS 127.0	ACD 118.65	SMC 124.05	TWR 128.1	DEP 118.4	Bearings are Magnetic Elevations in FEET AMSL
----------------------	----------------------	----------------------	---------------------	---------------------	--



TONTO ONE DELTA

RWY 05

- GRAD 6.8% to 700ft then 3.3%
- MAX IAS 205KT until NB505
- Track 047° to NB505
- MAX IAS 250KT until NB512
- Turn LEFT, track 317° to NB510
- Turn LEFT, track 283° to TUPMA
- Cross** TUPMA between 5000ft and 7000ft (RQ GRAD to TUPMA: 5.5%)
- Turn LEFT, track 230° to NB511
- Track 230° to NB512
- Cross** NB512 AT 8000ft (RQ GRAD to NB512: 4.7% FM TUPMA)
- MAX IAS 260KT until NB513
- Turn LEFT, track 199° to NB513
- MAX IAS 290KT until LAVÉB
- Turn LEFT, track 147° to NB514
- Turn LEFT, track 110° to KAKNU
- Cross** KAKNU AT or ABV FL140 (RQ GRAD to KAKNU: 5.6% FM NB512)
- Turn RIGHT, track 136° to LAVÉB
- Cross** LAVÉB AT or ABV FL150
- Turn RIGHT, track 164° to TONTO

RWY 23

- GRAD 4.0% to 800ft then 3.3%
- MAX IAS 260KT until LAVÉB
- Track 227° to NB523
- Turn RIGHT, track 282° to NB524
- Turn LEFT, track 256° to NB529
- Cross** NB529 AT or BLW 8000ft
- Turn LEFT, track 244° to NB530
- Turn LEFT, track 165° to NB531
- Turn LEFT, track 119° to NB532
- Turn LEFT, track 065° to KAKNU
- Cross** KAKNU AT or ABV FL140 (RQ GRAD to KAKNU: 6.2%)
- Turn RIGHT, track 136° to LAVÉB
- Cross** LAVÉB AT or ABV FL150
- Turn RIGHT, track 164° to TONTO

TRANSITIONS:

- NOWRA (NWA)** • From TONTO, turn RIGHT, track 176° to NWA NDB
- LEECE** • From TONTO, turn RIGHT, track 204° to LEECE

Changes: NEW PROCEDURE.

SWSDP21-187