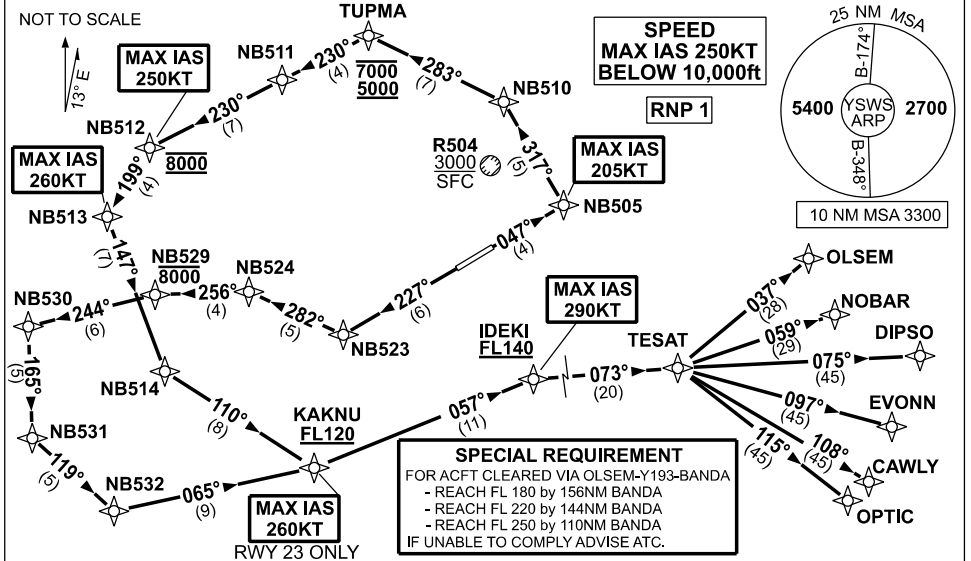


STANDARD INSTRUMENT DEPARTURES (SID) TESAT ONE DELTA (RNAV)

09 JUL 2026

SYDNEY/NANCY-BIRD WALTON, NSW (AWS)

ATIS 127.0	ACD 118.65	SMC 124.05	TWR 128.1	DEP 118.4	Bearings are Magnetic Elevations in FEET AMSL
---------------	---------------	---------------	--------------	--------------	--



TESAT ONE DELTA RWY 05

- GRAD 6.8% to 700ft, then 3.3%
- MAX IAS 205KT until NB510
- Track 047° to NB505
- MAX IAS 250KT until NB512
- Turn LEFT, track 317° to NB510
- Turn LEFT, track 283° to TUPMA
- Cross** TUPMA BTN 5000ft to 7000ft
(RQ GRAD to TUPMA: 5.5%)
- Turn LEFT, track 230° to NB511
- Track 230° to NB512
- Cross** NB512 AT 8000ft
(RQ GRAD to NB512: 4.7% FM TUPMA)
- MAX IAS 260KT until NB513
- Turn LEFT, track 199° to NB513
- MAX IAS 290KT until IDEKI
- Turn LEFT, track 147° to NB514
- Turn LEFT, track 110° to KAKNU
- Cross** KAKNU AT or ABV FL120
(RQ GRAD to KAKNU: 3.8% FM NB512)
- Turn LEFT, track 065° to KAKNU
- MAX IAS 260KT
- Turn LEFT, track 057° to IDEKI
- Cross** IDEKI AT or ABV FL140
- Turn RIGHT, track 073° to TESAT

RWY 23

- GRAD 4.0% to 800ft, then 3.3%
- MAX IAS 260KT until KAKNU
- Track 227° to NB523
- Turn RIGHT, track 282° to NB524
- Turn LEFT, track 256° to NB529
- Cross** NB529 AT or BLW 8000ft
- Turn LEFT, track 244° to NB530
- Turn LEFT, track 165° to NB531
- Turn LEFT, track 119° to NB532
- Turn LEFT, track 065° to KAKNU
- Cross** KAKNU AT or ABV FL120
(RQ GRAD to KAKNU 5.3%)
- MAX IAS 290KT until IDEKI
- Turn LEFT, track 057° to IDEKI
- Cross** IDEKI AT or ABV FL140
- Turn RIGHT, track 073° to TESAT

TRANSITIONS:

- OLSEM**
 - From TESAT, turn LEFT, track 037° to OLSEM, then as cleared.
 - See SPECIAL REQUIREMENT above.
- NOBAR**
 - From TESAT, turn LEFT, track 059° to NOBAR, then as cleared.
- DIPSO**
 - From TESAT, turn RIGHT, track 075° to DIPSO, then as cleared.
- EVONN**
 - From TESAT, turn RIGHT, track 097° to EVONN, then as cleared.
- CAWLY**
 - From TESAT, turn RIGHT, track 108° to CAWLY, then as cleared.
- OPTIC**
 - From TESAT, turn RIGHT, track 115° to OPTIC, then as cleared.

Changes: NEW PROCEDURE.

SWSDP20-187