

**STANDARD INSTRUMENT DEPARTURES (SID)
REDAS ONE NOVEMBER (RNAV)
SYDNEY/NANCY-BIRD WALTON, NSW (RNAV)**

09 JUL 2026

ATIS 127.0	ACD 118.65	SMC 124.05	TWR 128.1	DEP 118.4	Bearings are Magnetic Elevations in FEET AMSL
---------------	---------------	---------------	--------------	--------------	--

NOT TO SCALE



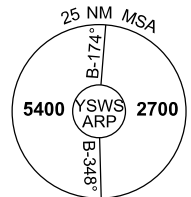
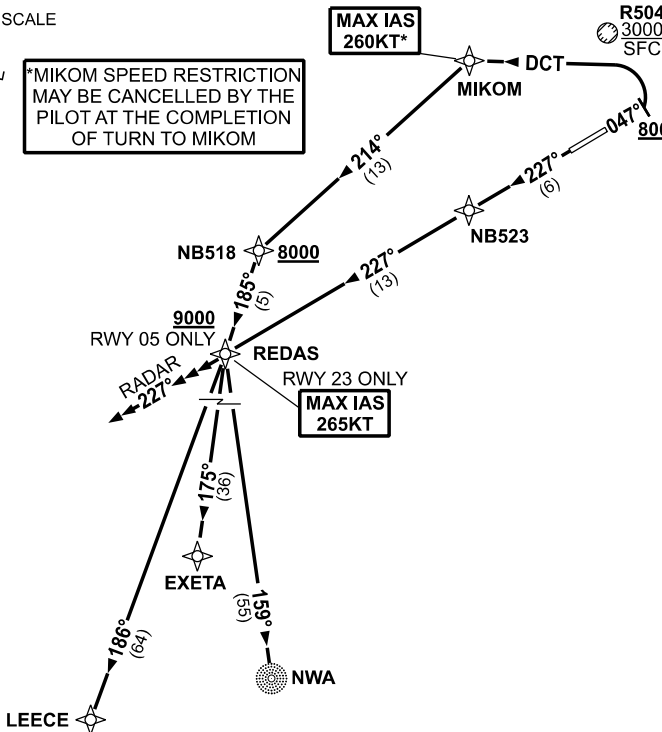
***MIKOM SPEED RESTRICTION
MAY BE CANCELLED BY THE
PILOT AT THE COMPLETION
OF TURN TO MIKOM**

**MAX IAS
260KT***

**R504
3000
SFC**

**SPEED
MAX IAS 250KT
BELOW 10,000ft**

RNP 1



10 NM MSA 3300

REDAS ONE NOVEMBER

RWY 05

GRAD 3.3%

*MAX IAS 260KT until MIKOM

- Track 047°, AT or ABV 800ft turn LEFT and track DCT to MIKOM
- Turn LEFT, track 214° to NB518
Cross NB518 AT or ABV 8000ft
- Turn LEFT, track 185° to REDAS
Cross REDAS AT or ABV 9000ft (RQ GRAD to REDAS: 3.6%)

RWY 23

GRAD 4.0% to 800ft, then 3.3%
MAX IAS 265KT until REDAS

- Track 227° to NB523
- Track 227° to REDAS

TRANSITIONS:

- NOWRA (NWA)** • From REDAS, turn LEFT, track 159° to NWA NDB
- EXETA** • From REDAS, turn LEFT, track 175° to EXETA
- LEECE** • From REDAS, track 186° to LEECE
- RADAR - RWY 23 only** • At REDAS continue tracking 227°
• Expect radar vectors to cleared route

Changes: NEW PROCEDURE.

SWSDP19-187