

**STANDARD INSTRUMENT DEPARTURES (SID)
RWY 23 KAMBA ONE QUEBEC (NON-JET) (RNAV)
SYDNEY/NANCY-BIRD WALTON, NSW (RNSW)**

09 JUL 2026

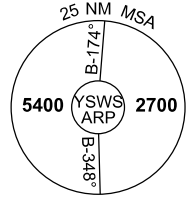
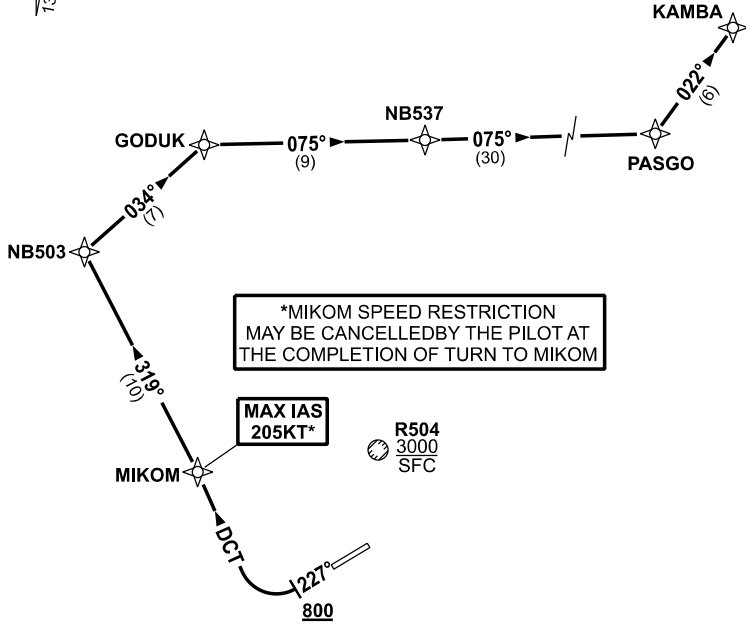
ATIS 127.0	ACD 118.65	SMC 124.05	TWR 128.1	DEP 118.4	Bearings are Magnetic Elevations in FEET AMSL
---------------	---------------	---------------	--------------	--------------	--

NOT TO SCALE



RNP 1

**SPEED
MAX IAS 250KT
BELOW 10,000ft**



10 NM MSA 3300

**KAMBA ONE QUEBEC
RWY 23**

GRAD 4% to 800ft, then 3.3% (6.6% to 4000ft)
*MAX IAS 205KT until MIKOM

- Track 227°, AT or ABV 800ft turn RIGHT, track DCT to MIKOM
- Track 319° to NB503
- Turn RIGHT, track 034° to GODUK
- Turn RIGHT, track 075° to NB537
- Track 075° to PASGO
- Turn LEFT, track 022° to KAMBA

Changes: NEW PROCEDURE.

SWSDP17-187