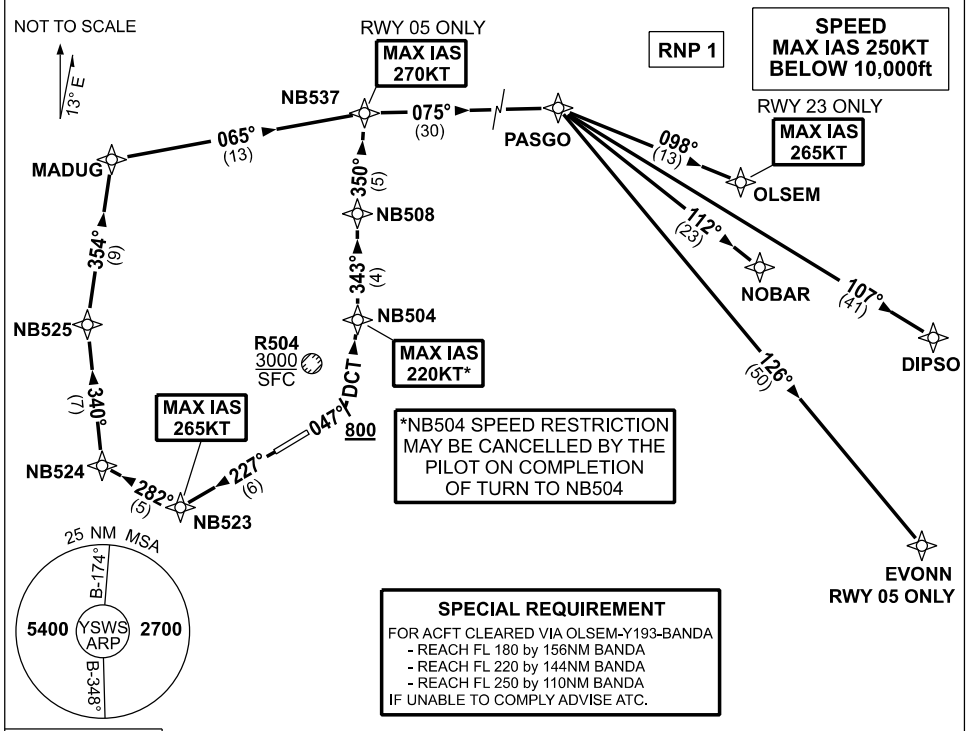


**STANDARD INSTRUMENT DEPARTURES (SID)
PASGO ONE NOVEMBER (RNAV)
SYDNEY/NANCY-BIRD WALTON, NSW (RNAV)**

09 JUL 2026

ATIS 127.0	ACD 118.65	SMC 124.05	TWR 128.1	DEP 118.4	Bearings are Magnetic Elevations in FEET AMSL
---------------	---------------	---------------	--------------	--------------	--



**PASGO ONE NOVEMBER
RWY 05**

- GRAD 4.1% to 700ft, then 3.3%
*MAX IAS 220KT until NB504
- Track 047°, AT or ABV 800ft turn LEFT, track DCT to NB504
MAX IAS 270KT until NB537
 - Track 343° to NB508
 - Turn RIGHT, track 350° to NB537
 - Turn RIGHT, track 075° to PASGO

RWY 23

- GRAD 4.0% to 800ft, then 3.3%
MAX IAS 265KT until NB523
- Track 227° to NB523
MAX IAS 265KT until OLSEM
(OLSEM TRANSITION ONLY)
 - Turn RIGHT, track 282° to NB524
 - Turn RIGHT, track 340° to NB525
 - Turn RIGHT, track 354° to MADUG
 - Turn RIGHT, track 065° to NB537
 - Turn RIGHT, track 075° to PASGO

TRANSITIONS:

- OLSEM** • From PASGO, turn RIGHT, track 098° to OLSEM
• See SPECIAL REQUIREMENT above.
- DIPSO** • From PASGO, turn RIGHT, track 107° to DIPSO
- NOBAR** • From PASGO, turn RIGHT, track 112° to NOBAR
- EVONN - RWY 05 only** • From PASGO, turn RIGHT, track 126° to EVONN

Changes: NEW PROCEDURE.

SWSDP16-187