

**STANDARD INSTRUMENT DEPARTURES (SID)
RWY 23 LEKID ONE DELTA (NON-JET) (RNAV)
SYDNEY/NANCY-BIRD WALTON, NSW (YSWS)**

09 JUL 2026

ATIS 127.0	ACD 118.65	SMC 124.05	TWR 128.1	DEP 118.4	Bearings are Magnetic Elevations in FEET AMSL
---------------	---------------	---------------	--------------	--------------	--

NOT TO SCALE



**SPEED
MAX IAS 250KT
BELOW 10,000ft**

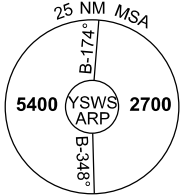
RNP 1

SPECIAL REQUIREMENT
FOR ACFT CLEARED VIA WLM AT or ABV FL130
- REACH FL130 by 31NM WLM NDB
FOR ACFT CLEARED VIA PUDUT-MATLA AT or
ABV FL130
- REACH FL130 by 15NM PUDUT
- REACH FL160 by PUDUT

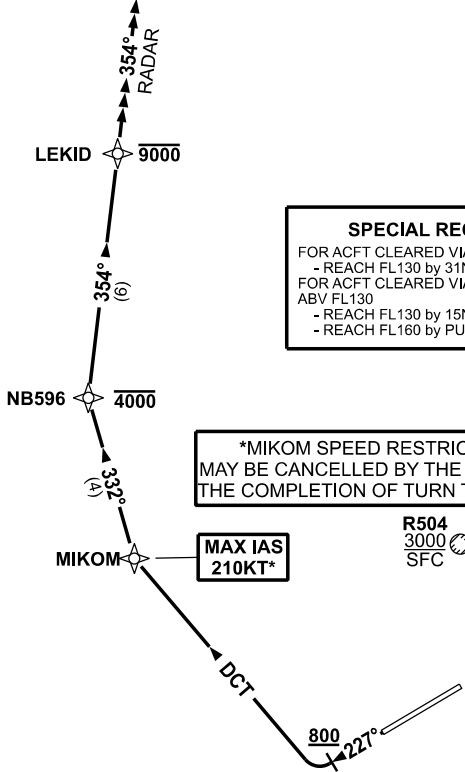
*MIKOM SPEED RESTRICTION
MAY BE CANCELLED BY THE PILOT AT
THE COMPLETION OF TURN TO MIKOM

**MAX IAS
210KT***

**R504
3000
SFC**



10 NM MSA 3300



**LEKID ONE DELTA (NON-JET)
RWY 23**

- GRAD 4.0% to 800ft, then 3.3% (6.6% to 4000ft)
- *MAX IAS 210KT until MIKOM
- Track 227°
- AT or ABV 800ft, turn RIGHT, track DCT to MIKOM
- Track 332° to NB596
- Cross NB596 AT or BLW 4000ft
- Turn RIGHT, track 354° to LEKID
- Cross LEKID AT or BLW 9000ft
- From LEKID continue tracking 354°
- Expect radar vectors to cleared route
- See SPECIAL REQUIREMENT above

Changes: NEW PROCEDURE.

SWSDP14-187