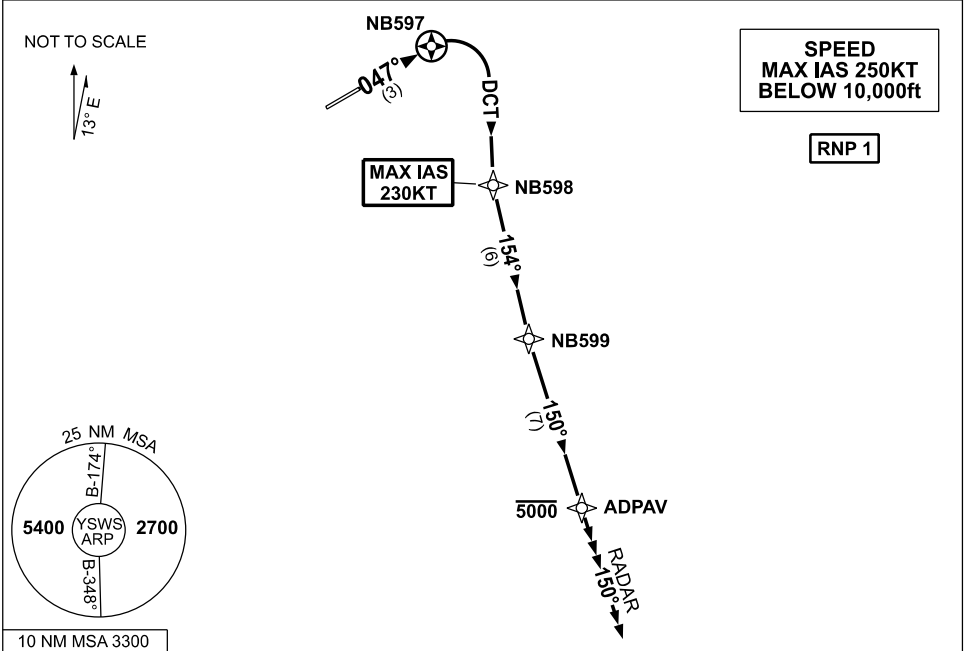


**STANDARD INSTRUMENT DEPARTURES (SID)
RWY 05 ADPAV ONE DELTA (NON-JET) (RNAV)
SYDNEY/NANCY-BIRD WALTON, NSW (YSWS)**

09 JUL 2026

ATIS 127.0	ACD 118.65	SMC 124.05	TWR 128.1	DEP 118.4	Bearings are Magnetic Elevations in FEET AMSL
---------------	---------------	---------------	--------------	--------------	--



ADPAV ONE DELTA (NON-JET)

RWY 05:

GRAD 3.3%

MAX IAS 230KT until NB598

- Track 047° to NB597
- Turn RIGHT, track DCT to NB598
- Track 154° to NB599
- Turn LEFT, track 150° to ADPAV
- **Cross** ADPAV AT or BLW 5000ft
- From ADPAV continue tracking 150°
- Expect radar vectors to cleared route