

**STANDARD INSTRUMENT DEPARTURES (SID)
RWY 05 ISDIT ONE DELTA (NON-JET) (RNAV)
SYDNEY/NANCY-BIRD WALTON, NSW (YSWS)**

09 JUL 2026

ATIS 127.0	ACD 118.65	SMC 124.05	TWR 128.1	DEP 118.4	Bearings are Magnetic Elevations in FEET AMSL
----------------------	----------------------	----------------------	---------------------	---------------------	--

NOT TO SCALE

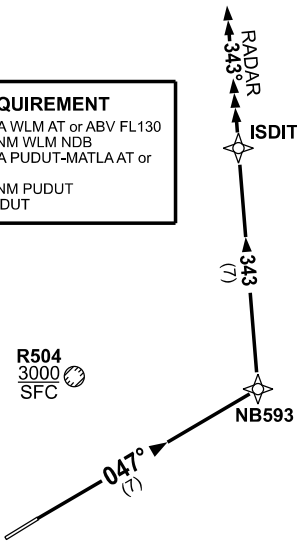


SPECIAL REQUIREMENT

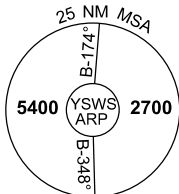
FOR ACFT CLEARED VIA WLM AT or ABV FL130
 - REACH FL130 by 31NM WLM NDB
 FOR ACFT CLEARED VIA PUDUT-MATLA AT or
 ABV FL130
 - REACH FL130 by 15NM PUDUT
 - REACH FL160 by PUDUT

**SPEED
MAX IAS 250KT
BELOW 10,000ft**

RNP 1



R504
3000
SFC



10 NM MSA 3300

ISDIT ONE DELTA (NON-JET)

RWY 05:

- GRAD 3.3%
- Track 047° to NB593
- Turn LEFT, track 343° to ISDIT
- From ISDIT continue tracking 343°
- Expect radar vectors to cleared route
- See SPECIAL REQUIREMENT above