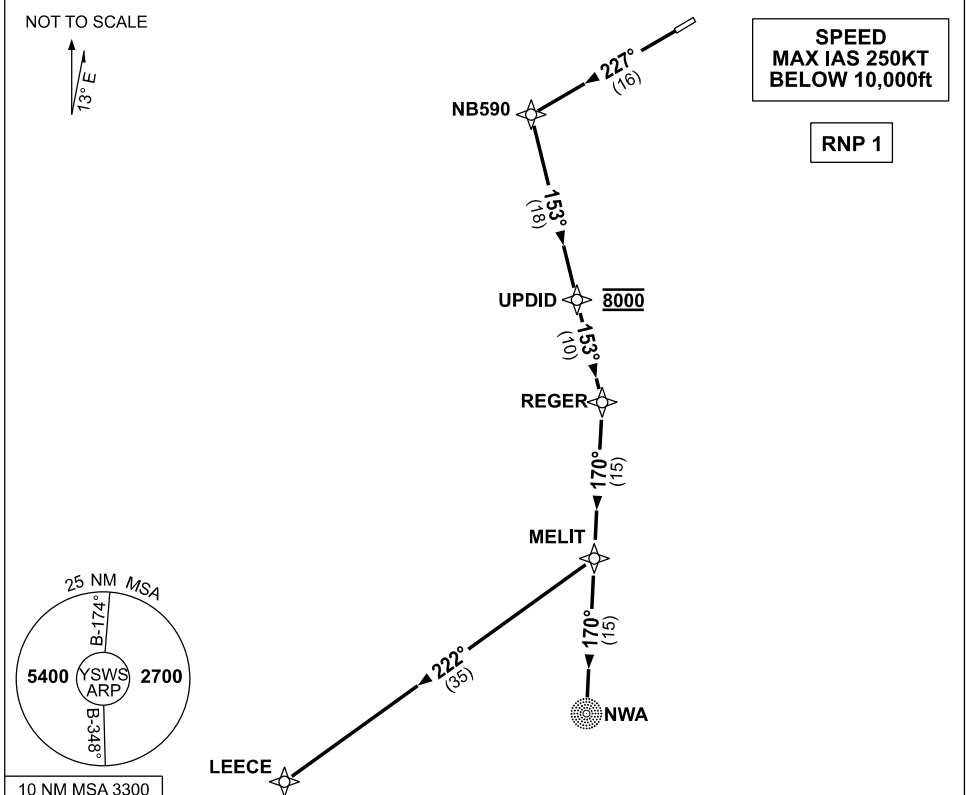


**STANDARD INSTRUMENT DEPARTURES (SID)  
RWY 23 MELIT ONE HOTEL (RNAV)  
SYDNEY/NANCY-BIRD WALTON, NSW (YSWS)**

**09 JUL 2026**

ATIS 127.0	ACD 118.65	SMC 124.05	TWR 128.1	DEP 118.4	Bearings are Magnetic Elevations in FEET AMSL
---------------	---------------	---------------	--------------	--------------	--



10 NM MSA 3300

**MELIT ONE HOTEL  
RWY 23**

- GRAD 3.3%
- Track 227° to NB590
- Turn LEFT, track 153° to UPDID
- **Cross** UPDID AT 8000ft  
(RQ GRAD TO UPDID: 3.9%)
- Track 153° to REGER
- Turn RIGHT, track 170° to MELIT

**TRANSITIONS:**

- LEECE** • From MELIT, turn RIGHT, track 222° to LEECE
- NOWRA (NWA)** • From MELIT, track 170° to NWA NDB

Changes: NEW PROCEDURE.

SWSDP11-187