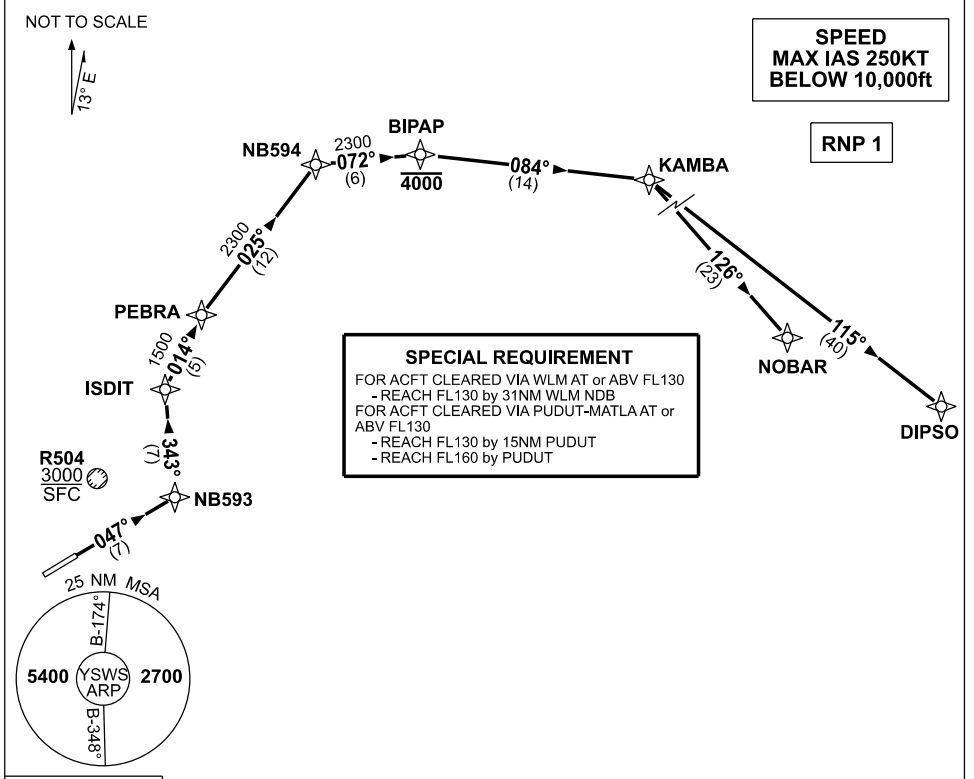


**STANDARD INSTRUMENT DEPARTURES (SID)  
RWY 05 KAMBA ONE DELTA (NON-JET) (RNAV)  
SYDNEY/NANCY-BIRD WALTON, NSW (YSWS)**

**09 JUL 2026**

|               |               |               |              |              |  |
|---------------|---------------|---------------|--------------|--------------|--|
| ATIS<br>127.0 | ACD<br>118.65 | SMC<br>124.05 | TWR<br>128.1 | DEP<br>118.4 | Bearings are Magnetic<br>Elevations in FEET AMSL |
|---------------|---------------|---------------|--------------|--------------|--|



10 NM MSA 3300

**KAMBA ONE DELTA (NON-JET)  
RWY 05**

- GRAD 3.3%
- Track 047° to NB593
- Turn LEFT, track 343° to ISDIT
- Turn RIGHT, track 014° to PEBRA
- Turn RIGHT, track 025° to NB594
- Turn RIGHT, track 072° to BIPAP
- **Cross BIPAP AT or BLW 4000ft**
- Turn RIGHT, track 084° to KAMBA
- See SPECIAL REQUIREMENT above

**TRANSITIONS:**

- DIPSO** • From KAMBA, turn RIGHT, track 115° to DIPSO
- NOBAR** • From KAMBA, turn RIGHT, track 126° to NOBAR

Changes: NEW PROCEDURE.

SWSDP10-187