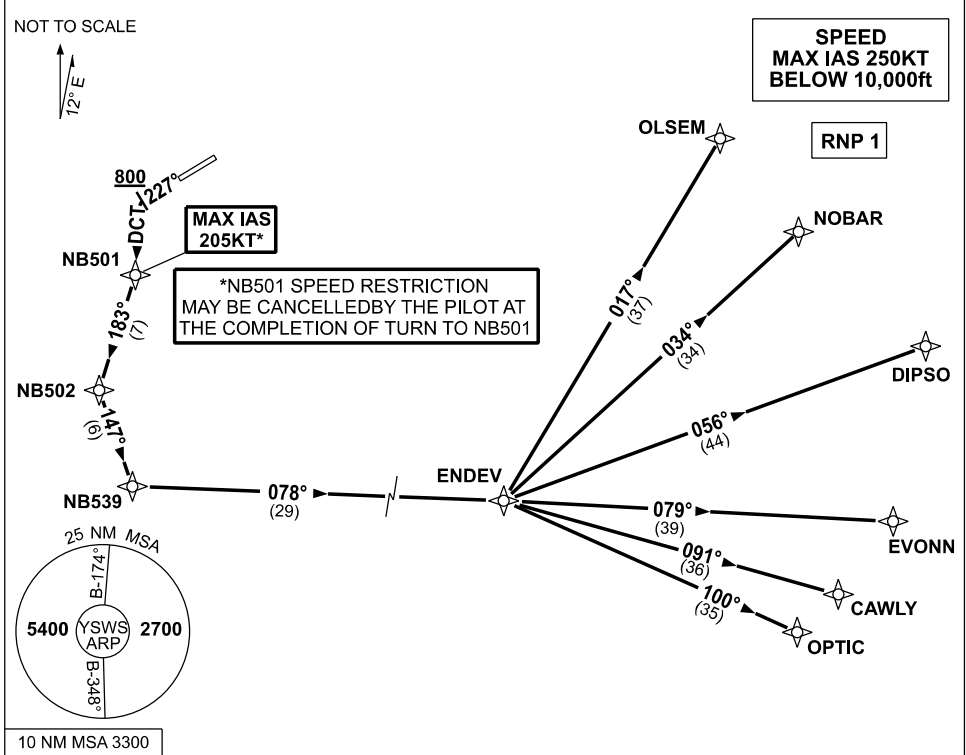


**STANDARD INSTRUMENT DEPARTURES (SID)
RWY 23 ENDEV ONE QUEBEC (RNAV)
SYDNEY/NANCY-BIRD WALTON, NSW (RNAS)**

09 JUL 2026

ATIS 127.0	ACD 118.65	SMC 124.05	TWR 128.1	DEP 118.4	Bearings are Magnetic Elevations in FEET AMSL
---------------	---------------	---------------	--------------	--------------	--



**ENDEV ONE QUEBEC
RWY 23**

- GRAD 6.5% to 800ft, then 3.3% (5.4% to 4500ft)
*MAX IAS 205KT until NB501
- Track 227°, AT or ABV 800ft turn LEFT and track DCT to NB501
 - Track 183° to NB502
 - Turn LEFT, track 147° to NB539
 - Turn LEFT, track 078° to ENDEV

TRANSITIONS:

- OLSEM** • From ENDEV, turn LEFT, track 017° to OLSEM
- NOBAR** • From ENDEV, turn LEFT, track 034° to NOBAR
- DIPSO** • From ENDEV, turn LEFT, track 056° to DIPSO
- EVONN** • From ENDEV, track 079° to EVONN
- CAWLY** • From ENDEV, turn RIGHT, track 091° to CAWLY
- OPTIC** • From ENDEV, turn RIGHT, track 100° to OPTIC

Changes: NEW PROCEDURE.

SWSDP09-187