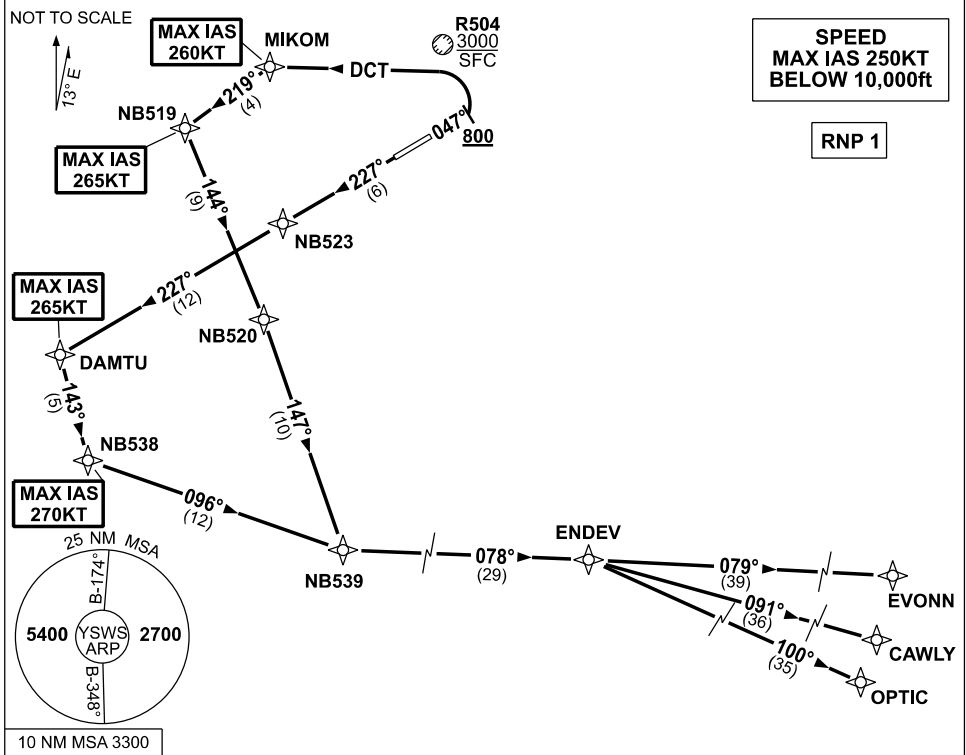


**STANDARD INSTRUMENT DEPARTURES (SID)
ENDEV ONE NOVEMBER (RNAV)
SYDNEY/NANCY-BIRD WALTON, NSW (YSWS)**

09 JUL 2026

ATIS 127.0	ACD 118.65	SMC 124.05	TWR 128.1	DEP 118.4	Bearings are Magnetic Elevations in FEET AMSL
----------------------	----------------------	----------------------	---------------------	---------------------	--



ENDEV ONE NOVEMBER

RWY 05

- GRAD 3.3%
- MAX IAS 260KT until MIKOM
- Track 047°, AT or ABV 800ft turn LEFT and track DCT to MIKOM
- MAX IAS 265KT until NB519
- Track 219° to NB519
- Turn LEFT, track 144° to NB520
- Turn RIGHT, track 147° to NB539
- Turn LEFT, track 078° to ENDEV

RWY 23

- GRAD 4.0% to 800ft, then 3.3%
- MAX IAS 265KT until DAMTU
- Track 227° to NB523
- Track 227° to DAMTU
- MAX IAS 270KT until NB538
- Turn LEFT, track 143° to NB538
- Turn LEFT, track 096° to NB539
- Turn LEFT, track 078° to ENDEV

TRANSITIONS:

- EVONN** • From ENDEV, track 079° to EVONN
- CAWLY** • From ENDEV, turn RIGHT, track 091° to CAWLY
- OPTIC** • From ENDEV, turn RIGHT, track 100° to OPTIC

Changes: NEW PROCEDURE.

SWSDP08-187