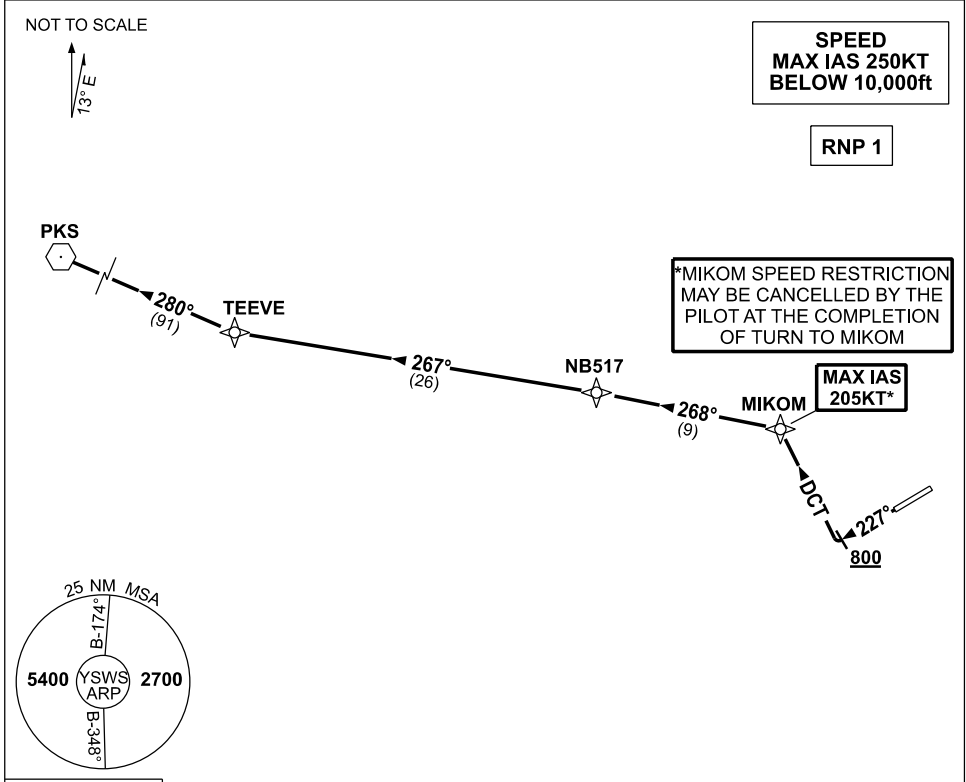


**STANDARD INSTRUMENT DEPARTURES (SID)  
RWY 23 TEEVE ONE QUEBEC (RNAV)  
SYDNEY/NANCY-BIRD WALTON, NSW (YSWS)**

**09 JUL 2026**

ATIS <b>127.0</b>	ACD <b>118.65</b>	SMC <b>124.05</b>	TWR <b>128.1</b>	DEP <b>118.4</b>	Bearings are Magnetic Elevations in FEET AMSL
----------------------	----------------------	----------------------	---------------------	---------------------	--



10 NM MSA 3300

**TEEVE ONE QUEBEC  
RWY 23**

GRAD 6.9% TO 800ft, then 3.3% (5.5% to 4000ft)  
\*MAX IAS 205KT until MIKOM

- Track 227°
- AT or ABV 800ft, turn RIGHT, track DCT to MIKOM
- Turn LEFT, track 268° to NB517
- Turn LEFT, track 267° to TEEVE

**TRANSITION:**

**PARKES (PKS)** • From TEEVE, turn RIGHT track 280° to PKS VOR

Changes: NEW PROCEDURE.

SWSDP07-187