

**STANDARD INSTRUMENT DEPARTURES (SID)
TEEVE ONE NOVEMBER (RNAV)
SYDNEY/NANCY-BIRD WALTON, NSW (YSWS)**

09 JUL 2026

ATIS 127.0	ACD 118.65	SMC 124.05	TWR 128.1	DEP 118.4	Bearings are Magnetic Elevations in FEET AMSL
---------------	---------------	---------------	--------------	--------------	--

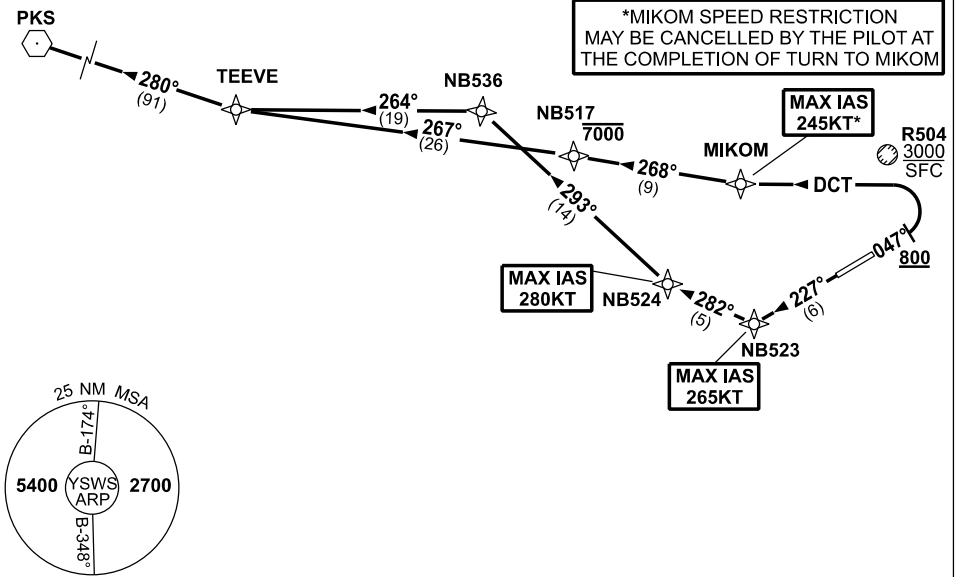
NOT TO SCALE



**SPEED
MAX IAS 250KT
BELOW 10,000ft**

RNP 1

*MIKOM SPEED RESTRICTION
MAY BE CANCELLED BY THE PILOT AT
THE COMPLETION OF TURN TO MIKOM



10 NM MSA 3300

TEEVE ONE NOVEMBER

RWY 05

- GRAD 3.3%
- *MAX IAS 245KT until MIKOM
- Track 047°
- AT or ABV 800ft turn LEFT, track DCT to MIKOM
- Track 268° to NB517
- **Cross** NB517 AT or BLW 7000ft
- Turn LEFT, track 267° to TEEVE

RWY 23

- GRAD 4.0% to 800ft, then 3.3%
- MAX IAS 265KT until NB523
- Track 227° to NB523
- MAX IAS 280KT until NB524
- Turn RIGHT, track 282° to NB524
- Turn RIGHT, track 293° to NB536
- Turn LEFT, track 264° to TEEVE

TRANSITION:

- PARKES (PKS)** • From TEEVE, turn RIGHT, track 280° to PKS VOR

Changes: NEW PROCEDURE.

SWSDP06-187