

**STANDARD INSTRUMENT DEPARTURES (SID)
TEEVE ONE DELTA (RNAV)
SYDNEY/NANCY-BIRD WALTON, NSW (RNAS)**

09 JUL 2026

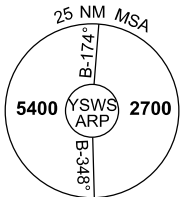
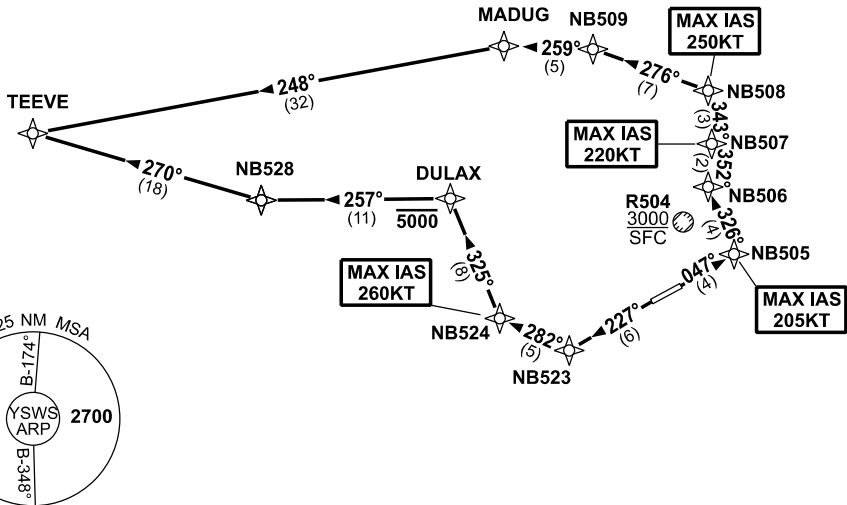
ATIS 127.0	ACD 118.65	SMC 124.05	TWR 128.1	DEP 118.4	Bearings are Magnetic Elevations in FEET AMSL
---------------	---------------	---------------	--------------	--------------	--

NOT TO SCALE



**SPEED
MAX IAS 250KT
BELOW 10,000ft**

RNP 1



10 NM MSA 3300

TEEVE ONE DELTA

RWY 05

- GRAD 5.2% to 700ft, then 3.3%
- MAX IAS 205KT until NB505
- Track 047° to NB505
- MAX IAS 220KT to NB507
- Turn LEFT, track 326° to NB506
- Turn RIGHT, track 352° to NB507
- MAX IAS 250KT until NB508
- Turn LEFT, track 343° to NB508
- Turn LEFT, track 276° to NB509
- Turn LEFT, track 259° to MADUG
- Turn LEFT, track 248° to TEEVE

RWY 23

- GRAD 4.0% to 800ft, then 3.3%
- MAX IAS 260KT until NB524
- Track 227° to NB523
- Turn RIGHT, track 282° to NB524
- Turn RIGHT, track 325° to DULAX
- Cross DULAX AT or BLW 5000ft**
- Turn LEFT, track 257° to NB528
- Turn RIGHT, track 270° to TEEVE

Changes: NEW PROCEDURE.

SWSDP05-187