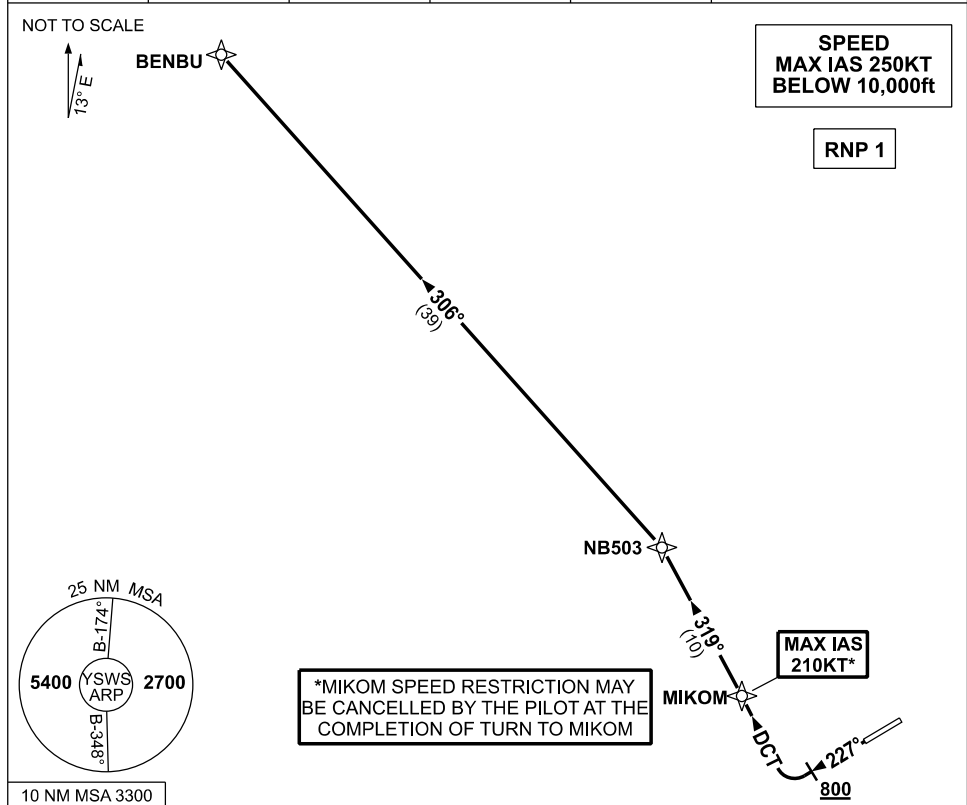


**STANDARD INSTRUMENT DEPARTURES (SID)
RWY 23 BENBU ONE QUEBEC (RNAV)
SYDNEY/NANCY-BIRD WALTON, NSW (YSWS)**

09 JUL 2026

ATIS 127.0	ACD 118.65	SMC 124.05	TWR 128.1	DEP 118.4	Bearings are Magnetic Elevations in FEET AMSL
---------------	---------------	---------------	--------------	--------------	--



**BENBU ONE QUEBEC
RWY 23**

- GRAD 4.1% to 800ft, then 3.3% (6.6% to 4000ft)
- *MAX IAS 210KT until MIKOM
- Track 227°
- AT or ABV 800ft, turn RIGHT and track DCT to MIKOM
- Track 319° to NB503
- Turn LEFT, track 306° to BENBU

Changes: NEW PROCEDURE.

SWSDP04-187