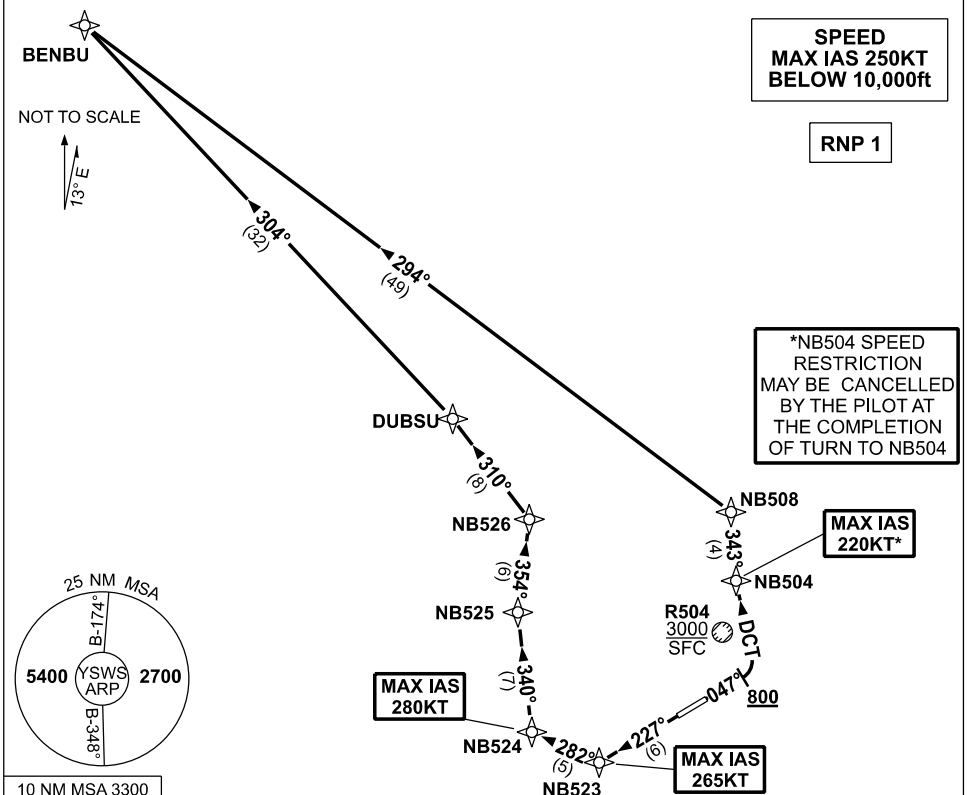


**STANDARD INSTRUMENT DEPARTURES (SID)  
BENBU ONE NOVEMBER (RNAV)  
SYDNEY/NANCY-BIRD WALTON, NSW (YSWS)**

**09 JUL 2026**

ATIS 127.0	ACD 118.65	SMC 124.05	TWR 128.1	DEP 118.4	Bearings are Magnetic Elevations in FEET AMSL
---------------	---------------	---------------	--------------	--------------	--



**BENBU ONE NOVEMBER**

**RWY 05**

GRAD 4.1% to 700ft, then 3.3%

\*MAX IAS 220KT until NB504

- Track 047°, AT or ABV 800ft turn LEFT and track DCT to NB504
- Track 343° to NB508
- Turn LEFT, track 294° to BENBU

**RWY 23**

GRAD 4.0% to 800ft, then 3.3%

MAX IAS 265KT until NB523

- Track 227° to NB523
- MAX IAS 280KT until NB524
- Turn RIGHT, track 282° to NB524
- Turn RIGHT, track 340° to NB525
- Turn RIGHT, track 354° to NB526
- Turn LEFT, track 310° to DUBSU
- Turn LEFT, track 304° to BENBU

Changes: NEW PROCEDURE.

SWSDP03-187