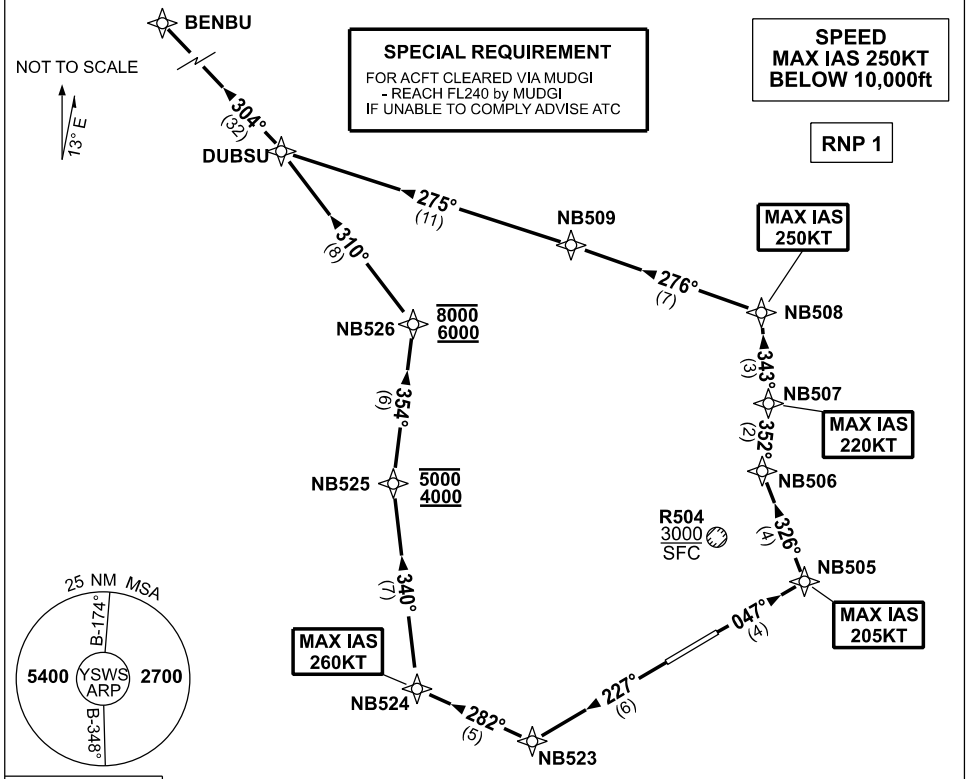


**STANDARD INSTRUMENT DEPARTURES (SID)
BENBU ONE DELTA (RNAV)
SYDNEY/NANCY-BIRD WALTON, NSW (ASAP)**

09 JUL 2026

ATIS 127.0	ACD 118.65	SMC 124.05	TWR 128.1	DEP 118.4	Bearings are Magnetic Elevations in FEET AMSL
----------------------	----------------------	----------------------	---------------------	---------------------	--



BENBU ONE DELTA

RWY 05

- GRAD 5.2% to 700ft, then 3.3%
- MAX IAS 205KT until NB505
- Track 047° to NB505
- Turn LEFT, track 326° to NB506
- Turn RIGHT, track 352° until NB507
- Turn LEFT, track 343° to NB508
- Turn LEFT, track 276° to NB509
- Turn LEFT, track 275° to DUBSU
- Turn RIGHT, track 304° to BENBU
- See SPECIAL REQUIREMENT above

RWY 23

- GRAD 4.0% to 800ft, then 3.3%
- MAX IAS 260KT to NB524
- Track 227° to NB523
- Turn RIGHT, track 282° to NB524
- Turn RIGHT, track 340° to NB525
- **Cross** NB525 BTN 4000ft and 5000ft
- Turn RIGHT, track 354° to NB526
- **Cross** NB526 BTN 6000ft and 8000ft (RQ GRAD to NB526: 4.2%)
- Turn LEFT, track 310° to DUBSU
- Turn LEFT, track 304° to BENBU
- See SPECIAL REQUIREMENT above

Changes: NEW PROCEDURE.

SWSDP02-187