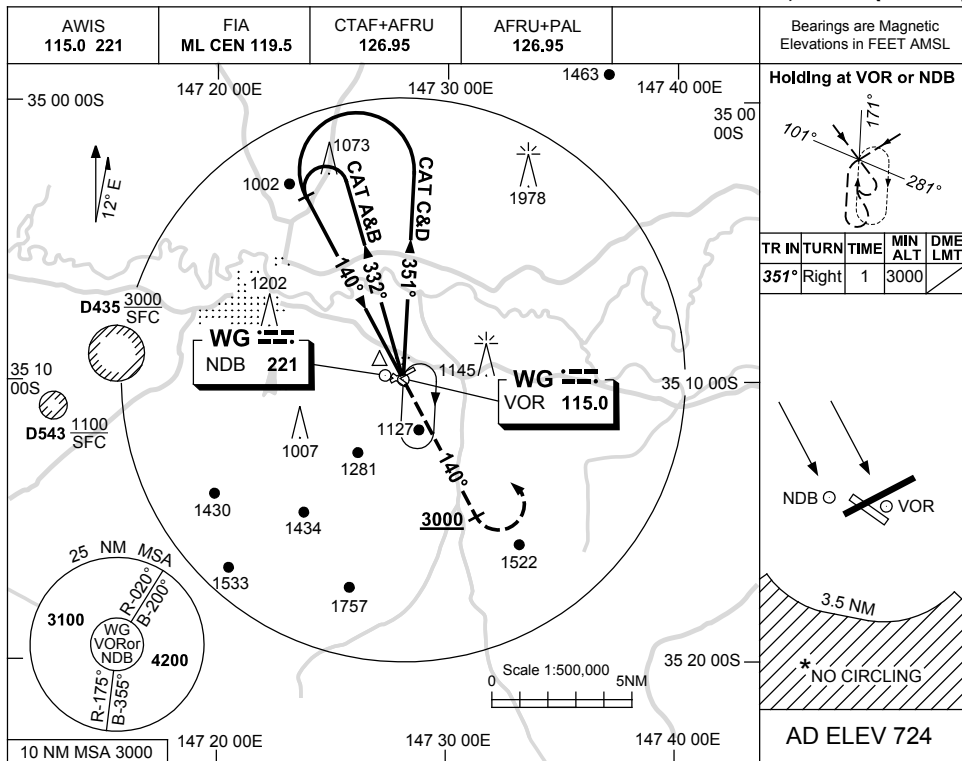


USE QNH

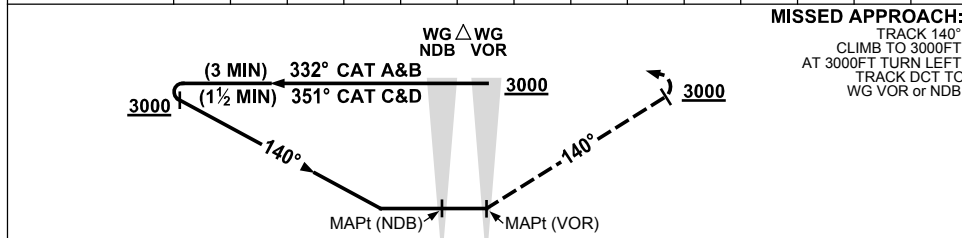
NDB-A or VOR-A

28 NOV 2024

WAGGA WAGGA, NSW (YSWG)



DME DIST	NOT APPLICABLE							
ALT								



NOTES

1. MAX IAS :
HOLDING: 230KT.
INITIAL :
CAT A&B 140KT.
CAT C&D 210KT.
- * 2. NO CIRCLING IN
SECTOR SOUTH
OF RWY 05/23
AND RWY 12/30
BEYOND 3.5NM.

CATEGORY	A	B	C	D
CIRCLING *	1710 (986-2.4)	1810 (1086-4.0)	2010 (1286-5.0)	
ALTERNATE	(1486-4.4)	(1586-6.0)	(1786-7.0)	

Changes: R408 AND R415 DELETED.

SWGNB01-181