

**STANDARD INSTRUMENT ARRIVAL (STAR)
BOREE FIVE ALPHA ARRIVAL (RNAV)
SYDNEY/KINGSFORD SMITH, NSW (YSSY)**

09 JUL 2026

ATIS 118.55	APP 124.4	DIRECTOR E 125.3 W 126.1	TWR RWY 16R/34L, 07/25 120.5 RWY 16L/34R 124.7	SMC E OF RWY 16R/34L 121.7 W OF RWY 16R/34L 126.5	Bearings are Magnetic Elevations in FEET AMSL
-----------------------	---------------------	--	--	---	--

NOT TO SCALE

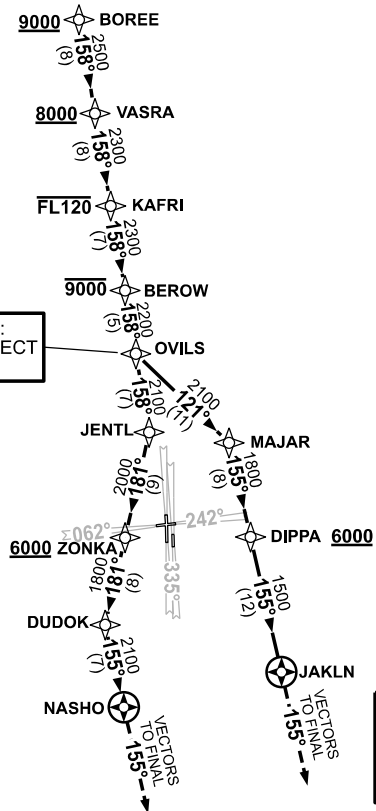
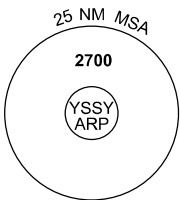


**SPEED
MAX IAS 250KT
BELOW 10,000ft**

ATC APCH SPEEDS	
NM FM TD	SPEED KT
10	185 -160
5	160 -150

RNP 1

RWY 07, 16L, 16R OR 25:
FM OVILS TRACK 158° EXPECT
VECTORS TO FINAL



NOTE:
For RWY 34R during
PRM operations, expect
to track downwind until
reaching 2000ft

10 NM MSA 2100

- ARRIVAL: BOREE FIVE ALPHA**
- Cross BOREE AT or ABV 9000ft
 - From BOREE track 158° to VASRA
 - Cross VASRA AT or ABV 8000ft
 - Track 158° to KAFRI
 - Cross KAFRI AT or BLW FL120
 - Track 158° to BEROW
 - Cross BEROW AT or BLW 9000ft
 - Track 158° to OVILS
- RWY 07, 16L, 16R, or 25:** • Track 158°, EXPECT radar vectors to final
- RWY 34L:**
- Track 158° to JENTL
 - Turn RIGHT, track 181° to ZONKA
 - Cross ZONKA AT or ABV 6000ft
 - Track 181° to DUDOK
 - Turn LEFT, track 155° to NASHO
 - Track 155°, EXPECT radar vectors to final
- RWY 34R:**
- Turn LEFT, track 121° to MAJAR
 - Turn RIGHT, track 155° to DIPPA
 - Cross DIPPA AT or ABV 6000ft
 - Track 155° to JAKLN
 - Track 155°, EXPECT radar vectors to final

**COMMUNICATIONS FAILURE: PROCEDURE IN IMC
IF ABLE CTC SY APP +61 2 9556 6515**

- Squawk 7600, comply with vertical navigation requirements, but not below MSA.
- Track via the latest STAR clearance to the nominated runway, then fly the most suitable approach in accordance with ERSB EMERG Section 1.5.

Changes: REVISED PROC.

SSYSR06-187