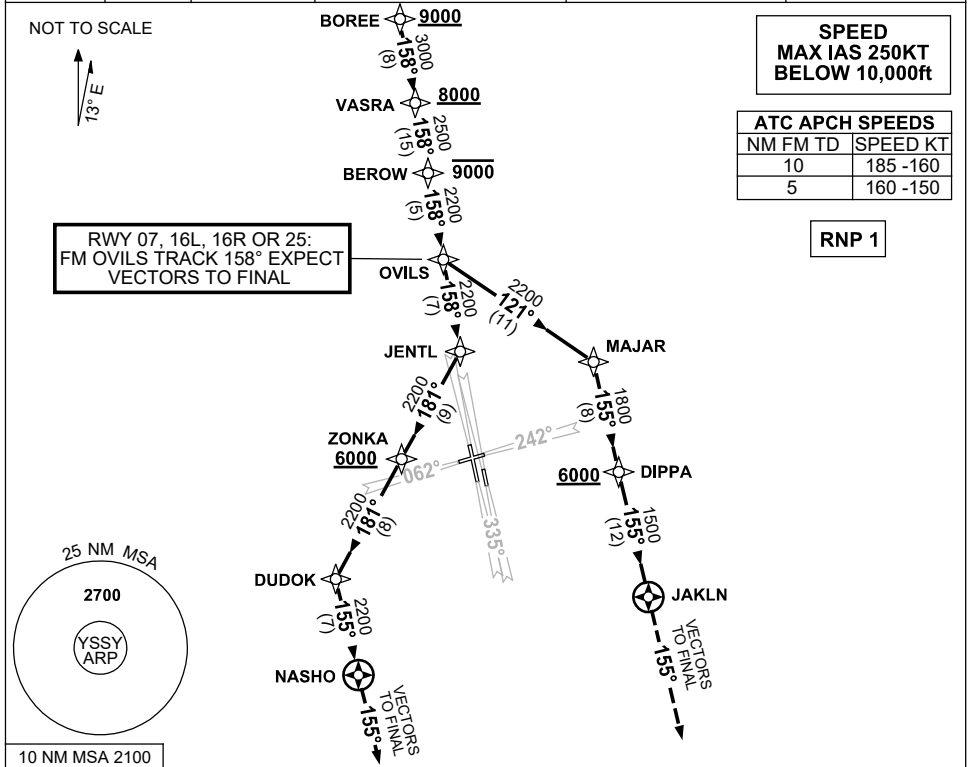


**STANDARD INSTRUMENT ARRIVAL (STAR)  
BOREE FOUR ALPHA ARRIVAL (RNAV)  
SYDNEY/KINGSFORD SMITH, NSW (YSSY)**

**12 JUN 2025**

ATIS 118.55	APP 124.4	DIRECTOR E 125.3 W 126.1	TWR RWY 16R/34L, 07/25 120.5 RWY 16L/34R 124.7	SMC E OF RWY 16R/34L 121.7 W OF RWY 16R/34L 126.5	Bearings are Magnetic Elevations in FEET AMSL
----------------	--------------	--------------------------------	--	---	--



**ARRIVAL:** **BOREE FOUR ALPHA**  
Cross BOREE AT or ABV 9000ft, then

- From BOREE track 158° to VASRA
- Cross VASRA AT or ABV 8000ft
- Track 158° to BEROW
- Cross BEROW AT or BLW 9000ft
- Track 158° to OVILS

**RWY 07, 16L, 16R, or 25:**

- Track 158°, EXPECT radar vectors to final

**RWY 34L:**

- Track 158° to JENTL
- Turn RIGHT, track 181° to ZONKA
- Cross ZONKA AT or ABV 6000ft
- Track 181° to DUDOK
- Turn LEFT, track 155° to NASHO
- Track 155°, EXPECT radar vectors to final

**RWY 34R:**

- Turn LEFT, track 121° to MAJAR
- Turn RIGHT, track 155° to DIPPA
- Cross DIPPA AT or ABV 6000ft
- Track 155° to JAKLN
- Track 155°, EXPECT radar vectors to final

**NOTE:** For RWY 34R during PRM operations, expect to track downwind until reaching 2000ft

**COMMUNICATIONS FAILURE: PROCEDURE IN IMC  
IF ABLE CTC SY APP +61 2 9556 6515**

- Squawk 7600, comply with vertical navigation requirements, but not below MSA.
- Track via the latest STAR clearance to the nominated runway, then fly the most suitable approach in accordance with ERSa EMERG Section 1.5.

Changes: ATIS FREQ REMOVED, Editorial.

SSYSR06-183