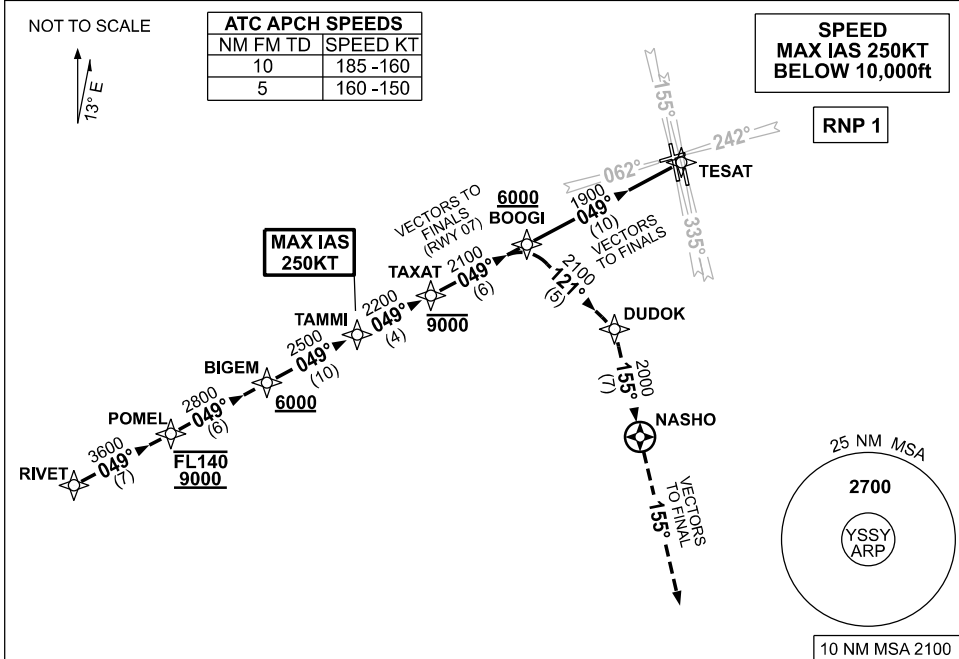


**STANDARD INSTRUMENT ARRIVAL (STAR)
RIVET FIVE ARRIVAL (RNAV)
SYDNEY/KINGSFORD SMITH, NSW (YSSY)**

09 JUL 2026

ATIS 118.55	APP 128.3	DIRECTOR E 125.3 W 126.1	TWR RWY 16R/34L, 07/25 120.5 RWY 16L/34R 124.7	SMC E OF RWY 16R/34L 121.7 W OF RWY 16R/34L 126.5	Bearings are Magnetic Elevations in FEET AMSL
-----------------------	---------------------	--	--	---	--



ARRIVAL:

RIVET FIVE

- From RIVET track 049° to POMEL
Cross POMEL BTN 9000ft and FL140
- Track 049° to BIGEM
Cross BIGEM AT or ABV 6000ft
- Track 049° to TAMMI
MAX IAS 250KT from TAMMI
- Track 049° to TAXAT
Cross TAXAT AT or BLW 9000ft

RWY 07:

- Track 049°, **EXPECT** radar vectors to final

**RWY 34L
or 34R:**

- Track 049° to BOOGI
Cross BOOGI AT or ABV 6000ft
- Turn **RIGHT**, track 121° to DUDOK
- Turn **RIGHT**, track 155° to NASHO
- Track 155°, **EXPECT** radar vectors to final

**RWY 16L,
16R or 25:**

- Track 049° to BOOGI
Cross BOOGI AT or ABV 6000ft
- Track 049° to TESAT
- EXPECT** radar vectors to final

**COMMUNICATIONS FAILURE: PROCEDURE IN IMC
IF ABLE CTC SY APP +61 2 9556 6515**

- Squawk 7600, comply with vertical navigation requirements, but not below MSA.
- Track via the latest STAR clearance to the nominated runway, then fly the most suitable approach in accordance with ERS A EMERG Section 1.5.

Changes: REVISED PROC.

SSYSR05-187