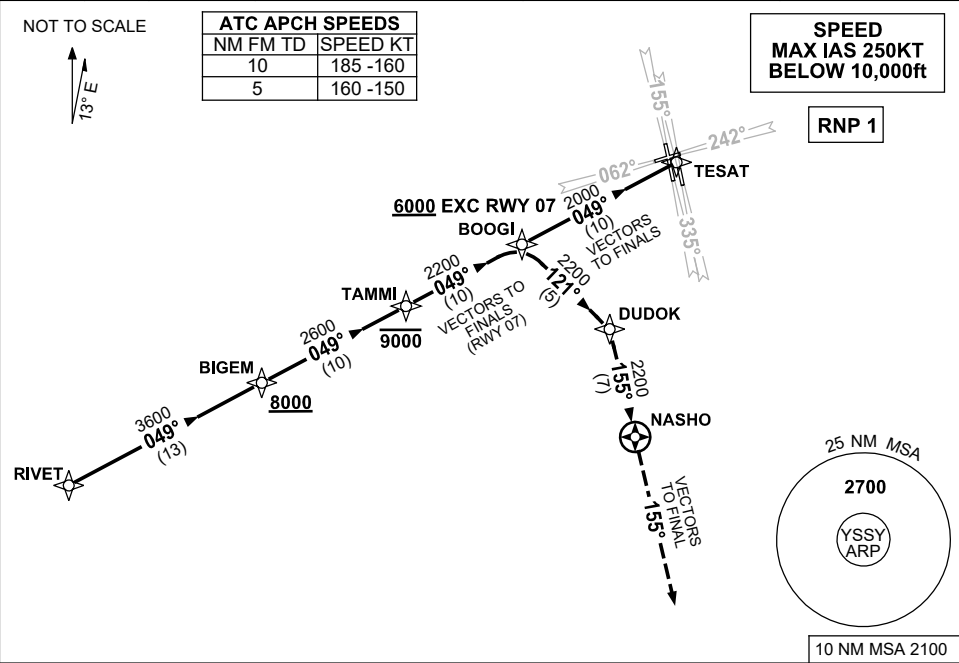


STANDARD INSTRUMENT ARRIVAL (STAR)
RIVET FOUR ARRIVAL (RNAV)
SYDNEY/KINGSFORD SMITH, NSW (YSSY)

12 JUN 2025

ATIS 118.55	APP 128.3	DIRECTOR 125.3 126.1	TWR RWY 16R/34L, 07/25 120.5 RWY 16L/34R 124.7	SMC E OF RWY 16R/34L 121.7 W OF RWY 16R/34L 126.5	Bearings are Magnetic Elevations in FEET AMSL
----------------	--------------	----------------------------	--	---	--



ARRIVAL: RIVET FOUR <ul style="list-style-type: none">From RIVET track 049° to BIGEM Cross BIGEM AT or ABV 8000ftTrack 049° to TAMMI Cross TAMMI AT or BLW 9000ft	RWY 07: <ul style="list-style-type: none">Track 049°, <u>EXPECT</u> radar vectors to final	RWY 34L or 34R: <ul style="list-style-type: none">Track 049° to BOOGI Cross BOOGI AT or ABV 6000ftTurn RIGHT, track 121° to DUDOKTurn RIGHT, track 155° to NASHOTrack 155°, <u>EXPECT</u> radar vectors to final
RWY 16L, 16R or 25: <ul style="list-style-type: none">Track 049° to BOOGI Cross BOOGI AT or ABV 6000ftTrack 049° to TESAT<u>EXPECT</u> radar vectors to final		

**COMMUNICATIONS FAILURE: PROCEDURE IN IMC
IF ABLE CTC SY APP +61 2 9556 6515**

- Squawk 7600, comply with vertical navigation requirements, but not below MSA.
- Track via the latest STAR clearance to the nominated runway, then fly the most suitable approach in accordance with ERSa EMERG Section 1.5.

Changes: ATIS FREQ REMOVED, Editorial. SSYSR05-183