

**STANDARD INSTRUMENT ARRIVAL (STAR)
AKMIR ONE ARRIVAL (RNAV)
SYDNEY/KINGSFORD SMITH, NSW (YSSY)**

09 JUL 2026

ATIS 118.55	APP 128.3	DIRECTOR E 125.3 W 126.1	TWR RWY 16R/34L, 07/25 120.5 RWY 16L/34R 124.7	SMC E OF RWY 16R/34L 121.7 W OF RWY 16R/34L 126.5	Bearings are Magnetic Elevations in FEET AMSL
-----------------------	---------------------	--	--	---	--

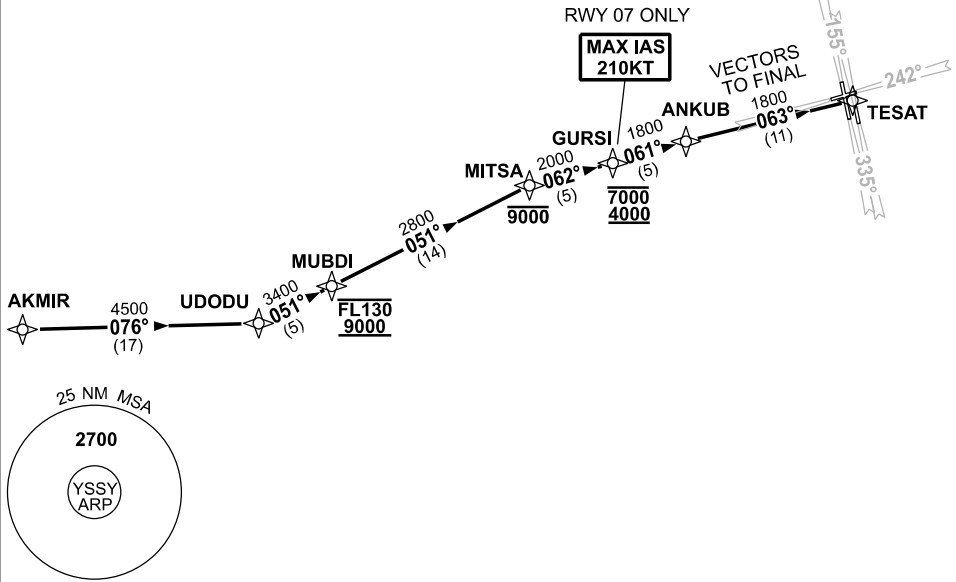
NOT TO SCALE



ATC APCH SPEEDS	
NM FM TD	SPEED KT
10	185 -160
5	160 -150

**SPEED
MAX IAS 250KT
BELOW 10,000ft**

RNP 1



10 NM MSA 2100

ARRIVAL: AKMIR ONE

- Track 076° to UDODU
- Turn LEFT, track 051° to MUBDI
Cross MUBDI BTN 9000ft to FL130
- Track 051° to MITSA
Cross MITSA AT or BLW 9000ft
- Turn RIGHT, track 062° to GURSI
Cross GURSI BTN 4000ft to 7000ft

RWY 07

MAX IAS 210KT AT GURSI
From GURSI, track via GLS RWY 07 or RNP RWY 07 or LOC RWY 07

RWY 25, 16L, 16R, 34L, 34R

- Track 061° to ANKUB
- Track 063° to TESAT
- EXPECT radar vectors to final

**COMMUNICATIONS FAILURE: PROCEDURE IN IMC
IF ABLE CTC SY APP +61 2 9556 6515**

- Squawk 7600, comply with vertical navigation requirements, but not below MSA.
- Track via the latest STAR clearance to the nominated runway, then fly the most suitable approach in accordance with ERS A EMERG Section 1.5.

Changes: NEW PROCEDURE.

SSYSR03-187