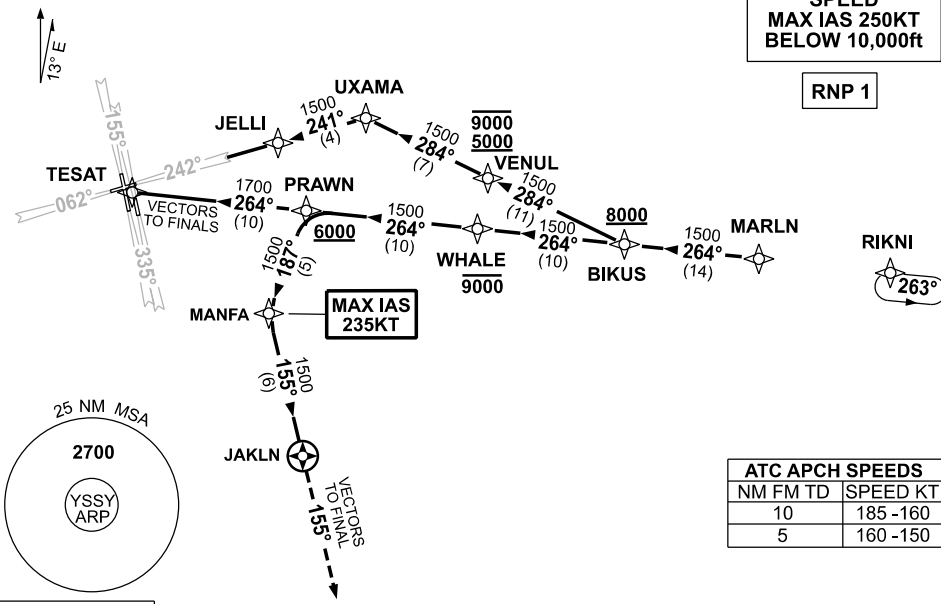


**STANDARD INSTRUMENT ARRIVAL (STAR)  
MARLN SIX ARRIVAL (RNAV)  
SYDNEY/KINGSFORD SMITH, NSW (YSSY)**

**09 JUL 2026**

ATIS <b>118.55</b>	APP <b>124.4</b>	DIRECTOR <b>E 125.3 W 126.1</b>	TWR RWY 16R/34L, 07/25 <b>120.5</b> RWY 16L/34R <b>124.7</b>	SMC E OF RWY 16R/34L <b>121.7</b> W OF RWY 16R/34L <b>126.5</b>	Bearings are Magnetic Elevations in FEET AMSL
-----------------------	---------------------	--	--	---	--

NOT TO SCALE



**NOTE: TRACKING VIA RIKNI SUBJECT TO ATC CLEARANCE**

**MARLN SIX ARRIVAL**

- From MARLN track 264° to BIKUS  
**Cross** BIKUS AT or ABV 8000ft

- RWY 25:**
- Track 284° to VENUL  
**Cross** VENUL BTN 5000ft AND 9000ft
  - Track 284° to UXAMA
  - Track 241° to JELLI for GLS RWY 25 or ILS RWY 25 or RNP RWY 25 or LOC RWY 25

- RWY 07, 34L, 16L, 16R:**
- Track 264° to WHALE  
**Cross** WHALE AT or BLW 9000ft
  - Track 264° to PRAWN  
**Cross** PRAWN AT or ABV 6000ft
  - Track 264° to TESAT, EXPECT radar vectors to final

- RWY 34R:**
- Track 264° to WHALE  
**Cross** WHALE AT or BLW 9000ft
  - Track 264° to PRAWN  
**Cross** PRAWN AT or ABV 6000ft
  - Turn LEFT track 187° to MANFA  
MAX IAS 235KT AT MANFA
  - Turn LEFT track 155° to JAKLN
  - Track 155°, EXPECT radar vectors to final

**NOTE:** For RWY 34R during PRM operations, expect to track downwind until reaching 2000ft.

**COMMUNICATIONS FAILURE: PROCEDURE IN IMC  
IF ABLE CTC SY APP +61 2 9556 6515**

- Squawk 7600, comply with vertical navigation requirements, but not below MSA.
- Track via the latest STAR clearance to the nominated runway, then fly the most suitable approach in accordance with ERS A EMERG Section 1.5.