

**STANDARD INSTRUMENT ARRIVAL (STAR)
MARLN FIVE ARRIVAL (RNAV)
SYDNEY/KINGSFORD SMITH, NSW (YSSY)**

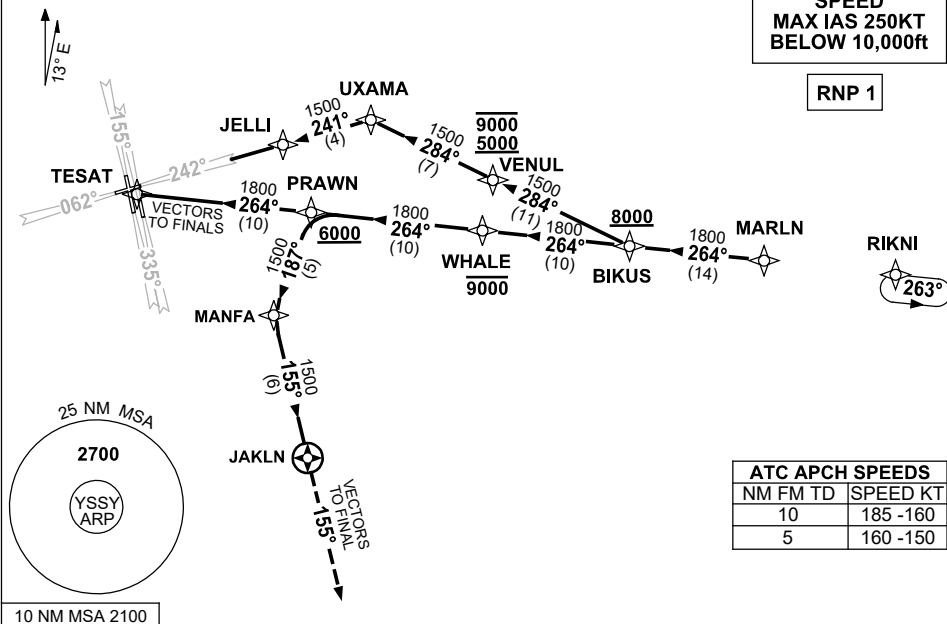
12 JUN 2025

ATIS 118.55	APP 124.4	DIRECTOR 125.3 126.1	TWR RWY 16R/34L, 07/25 120.5 RWY 16L/34R 124.7	SMC E OF RWY 16R/34L 121.7 W OF RWY 16R/34L 126.5	Bearings are Magnetic Elevations in FEET AMSL
----------------	--------------	----------------------------	--	---	--

NOT TO SCALE

**SPEED
MAX IAS 250KT
BELOW 10,000ft**

RNP 1



ATC APCH SPEEDS			
NM	FM	TD	SPEED KT
10			185 -160
5			160 -150

NOTE: TRACKING VIA RIKNI SUBJECT TO ATC CLEARANCE

ARRIVAL: MARLN FIVE

- From MARLN track 264° to BIKUS
Cross BIKUS AT or ABV 8000ft

- RWY 25:**
- Track 284° to VENUL
Cross VENUL BTN 5000ft AND 9000ft
 - Track 284° to UXAMA
 - Track 241° to JELLI for GLS RWY 25 or ILS RWY 25 or RNP RWY 25 or LOC RWY 25

- RWY 07, 34L, 16L, 16R:**
- Track 264° to WHALE
Cross WHALE AT or BLW 9000ft
 - Track 264° to PRAWN
Cross PRAWN AT or ABV 6000ft
 - Track 264° to TESAT, **EXPECT** radar vectors to final

- RWY 34R:**
- Track 264° to WHALE
Cross WHALE AT or BLW 9000ft
 - Track 264° to PRAWN
Cross PRAWN AT or ABV 6000ft
 - Turn LEFT, track 187° to MANFA
 - Turn LEFT, track 155° to JAKLN
 - Track 155°, **EXPECT** radar vectors to final

NOTE: For RWY 34R during PRM operations, expect to track downwind until reaching 2000ft.

**COMMUNICATIONS FAILURE: PROCEDURE IN IMC
IF ABLE CTC SY APP +61 2 9556 6515**

- Squawk 7600, comply with vertical navigation requirements, but not below MSA.
- Track via the latest STAR clearance to the nominated runway, then fly the most suitable approach in accordance with ERSa EMERG Section 1.5.

Changes: ATIS FREQ REMOVED, Editorial.

SSYSR02-183