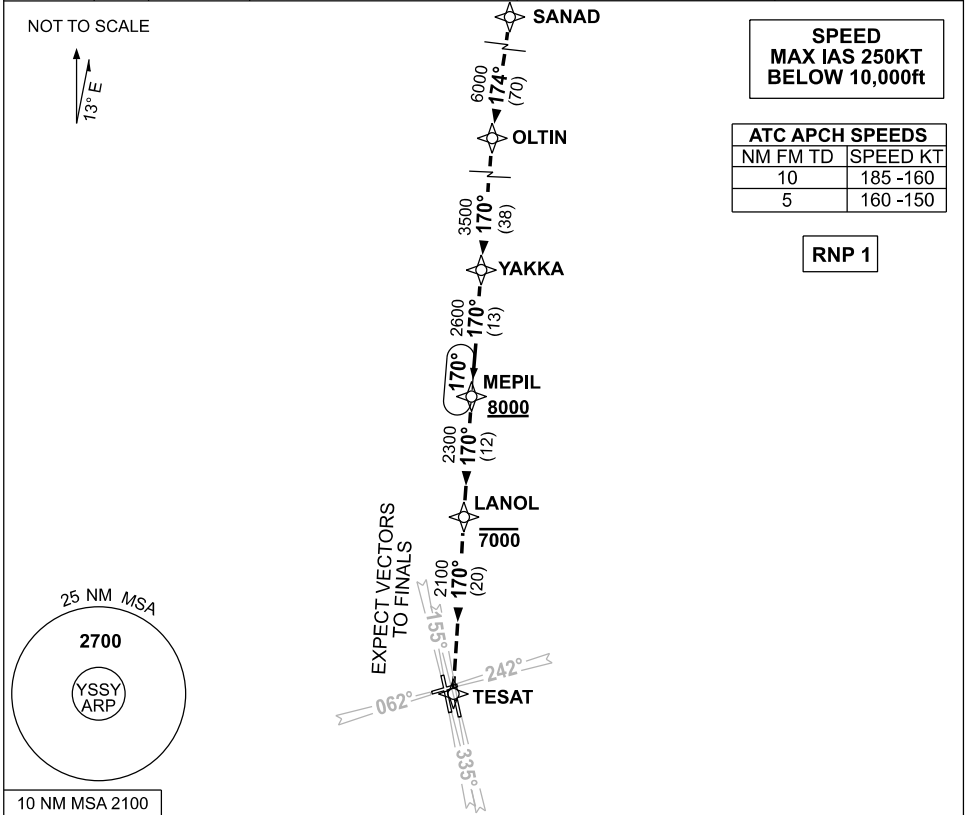


**STANDARD INSTRUMENT ARRIVAL (STAR)
MEPIL FOUR ARRIVAL (RNAV)
SYDNEY/KINGSFORD SMITH, NSW (YSSY)**

09 JUL 2026

ATIS 118.55	APP 124.4	DIRECTOR E 125.3 W 126.1	TWR RWY 16R/34L, 07/25 RWY 16L/34R	120.5 124.7	SMC E OF RWY 16R/34L W OF RWY 16R/34L	121.7 126.5	Bearings are Magnetic Elevations in FEET AMSL
-----------------------	---------------------	--	--	------------------------	---	------------------------	--



10 NM MSA 2100

TRANSITIONS:

- SANAD:**
- From SANAD, track 174° to OLTIN
 - Turn LEFT track 170° to YAKKA
 - Track 170° to MEPIL
Cross MEPIL AT or ABV 8000ft
Then follow ARRIVAL instructions

- MEPIL FOUR ARRIVAL**
- From MEPIL, track 170° to LANOL
Cross LANOL AT or BLW 7000ft
 - Track 170° to TESAT
EXPECT radar vectors to final approach course after LANOL

**COMMUNICATIONS FAILURE: PROCEDURE IN IMC
IF ABLE CTC SY APP +61 2 9556 6515**

- Squawk 7600, comply with vertical navigation requirements, but not below MSA.
- Track via the latest STAR clearance to the nominated runway, then fly the most suitable approach in accordance with ERSA EMERG Section 1.5.

Changes: LSALT, Editorial.

SSYSR01-187