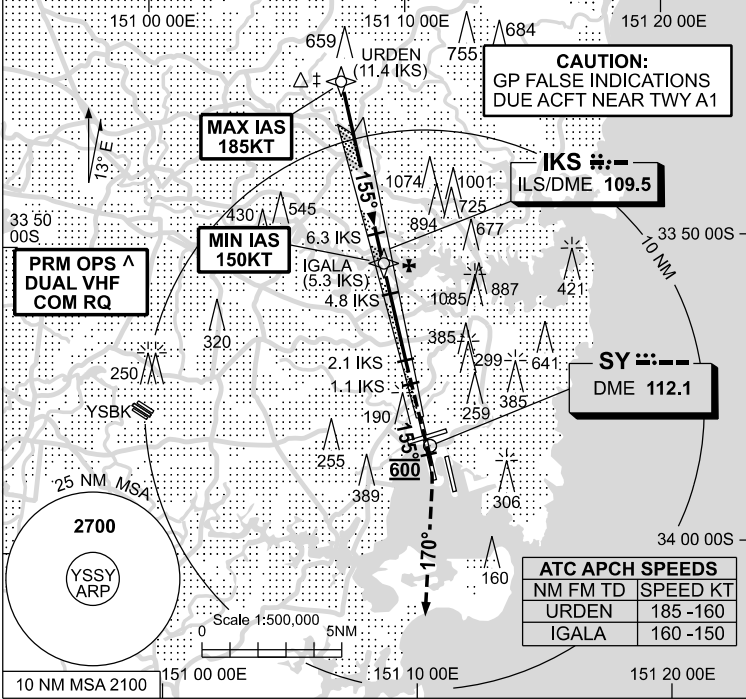


09 JUL 2026

ATIS 118.55	APP N 124.4 S 128.3	DIRECTOR E 125.3 W 126.1	PRM ^ 119.45	TWR 120.5	SMC E OF RWY 16R/34L 121.7 W OF RWY 16R/34L 126.5
-----------------------	-----------------------------------	--	------------------------	---------------------	---

NAVAID RQ:
 • DME or GNSS (ILS)
 • DME (LOC ONLY)



Holding as advised by ATC

TR	IN	TURN	TIME	MIN ALT	DME LMT

* NO CIRCLING

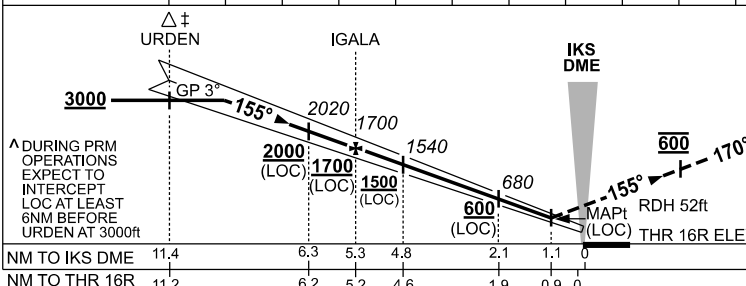
3 DME SY

IKS O DME

SY DME

AD ELEV 21
 Bearings are Magnetic
 Elevations in FEET AMSL

NM TO IKS DME	9.4	9	8	7	6.3	5.3	5	4.8	4	3	2.1	2	1.5	
ALT (3° APCH PATH)	3000	2870	2560	2240	2020	1700	1600	1540	1280	960	680	650	500	



MISSED APPROACH:
 TRACK 155°. AT 600ft.
 TURN RIGHT TRACK 170°.
 CLIMB TO 3000ft OR
 AS DIRECTED BY ATC.

NM TO IKS DME	11.4	6.3	5.3	4.8	2.1	1.1	0
NM TO THR 16R	11.2	6.2	5.2	4.6	1.9	0.9	0

- NOTES**
1. MAX IAS :
URDEN : 185KT.
 2. ACFT MAY BE RADAR VECTORED TO FNA.
 3. SIMULTANEOUS APCH AUTHORIZED WITH RWY 16L. SEE PRM USER INSTRUCTIONS FOR ADDN RQMNTS.
 4. NO CIRCLING BEYOND 3 DME SY EAST OF RWY 16R & NORTH OF RWY 25.
 5. SPECIAL ALTN MNM 700/2.5KM.

CATEGORY	A	B	C	D/D _L
S-I ILS CAT I		210 (203)	0.8	550 RVR
S-I LOC		500 (493-2.0)		
CIRCLING *	790 (769-2.4)	1000 (979-4.0)		1000 (979-5.0)
ALTERNATE *	(1269-4.4)	(1479-6.0)		(1479-7.0)

Changes: SDF, LOC minima, CIRCLING and ALTERNATE minima.

SSYII11-187

CAUTION: CLOSELY SPACED PARALLEL RUNWAYS ^