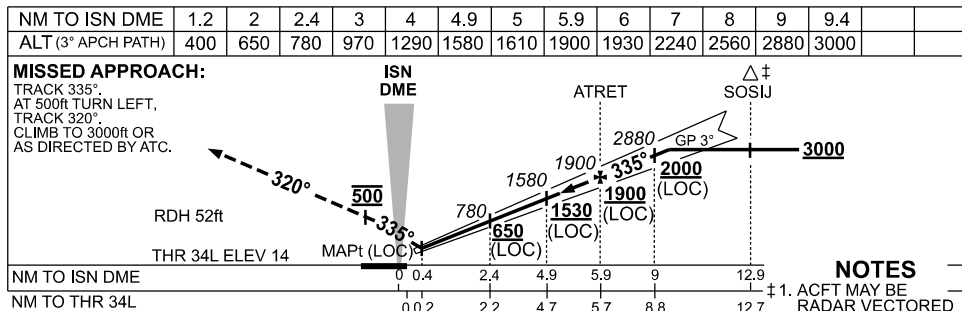
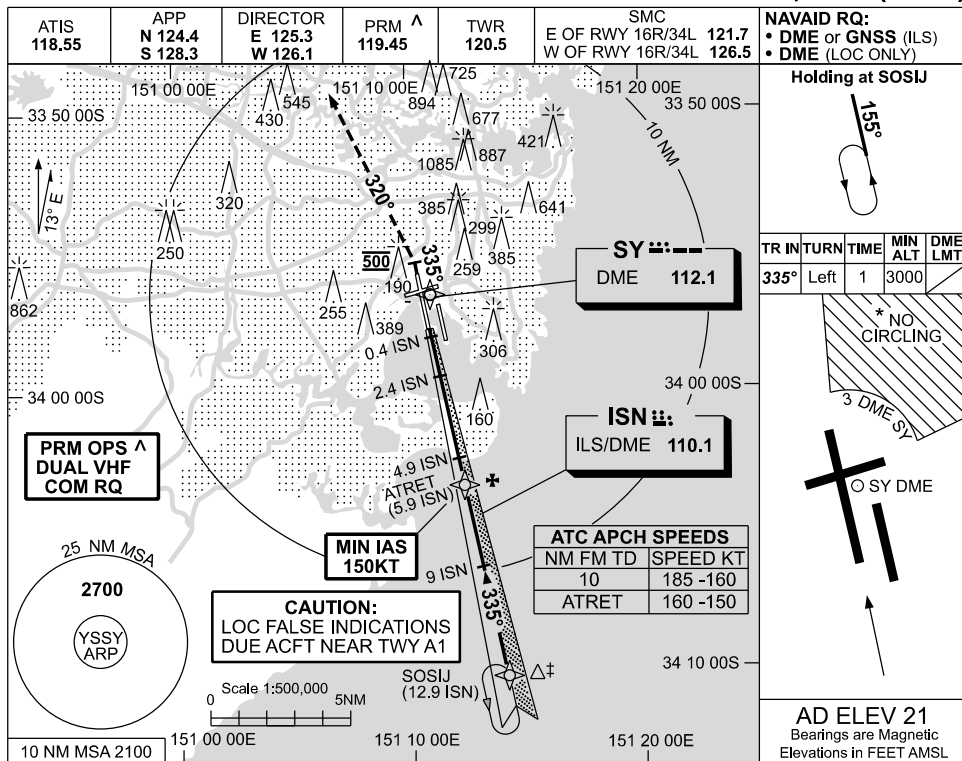


09 JUL 2026

SYDNEY/KINGSFORD SMITH, NSW (YSSY)



- NOTES**
1. ACFT MAY BE RADAR VECTORED TO FNA.
 2. SIMULTANEOUS APCH AUTHORIZED WITH RWY 34R. SEE PRM USER INSTRUCTIONS FOR ADDN RQMNTS.
 3. NO CIRCLING BEYOND 3 DME SY EAST OF RWY 16R & NORTH OF RWY 25.
 4. SPECIAL ALTN MNM 700/2.5KM.

CATEGORY	A	B	C	D/D _L
S-I ILS CAT I	220 (206)		0.8	800 RVR
S-I LOC	400 (386-1.7)			
CIRCLING *	790 (769-2.4)		1000 (979-4.0)	1000 (979-5.0)
ALTERNATE ‡	(1269-4.4)		(1479-6.0)	(1479-7.0)

Changes: CIRCLING & ALTERNATE MINIMA.

SSYII10-187

CAUTION: CLOSELY SPACED PARALLEL RUNWAYS [^]