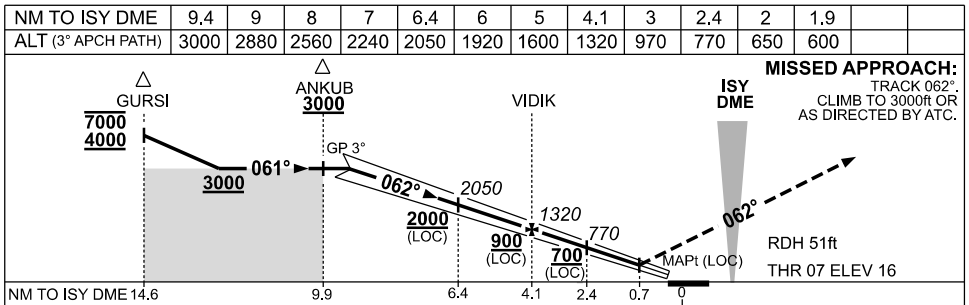
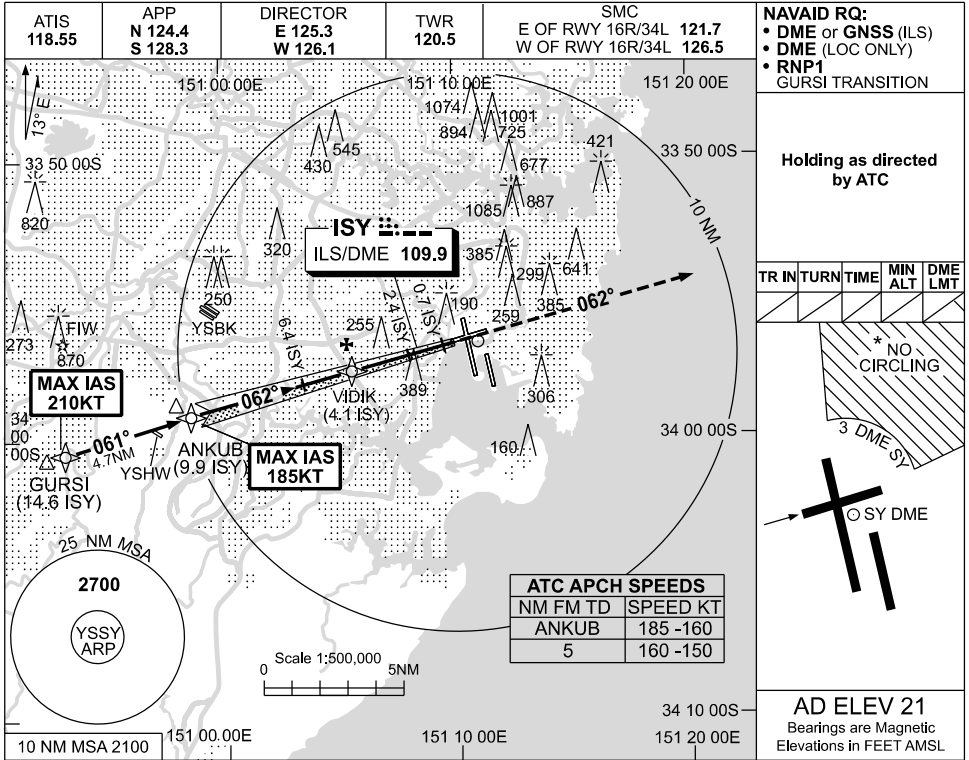


USE QNH

ILS or LOC RWY 07

09 JUL 2026

**SYDNEY/KINGSFORD SMITH, NSW (YSSY)**



**NOTES**

1. MAX IAS:  
GURSI : 210KT.  
ANKUB : 185KT.
- \* 2. NO CIRCLING BEYOND 3 DME SY EAST OF RWY 16R & NORTH OF RWY 25.
- \* 3. SPECIAL ALTN MNM 700/2.5KM. (NOT APPLICABLE TO LOC/DME).

CATEGORY	A	B	C	D/D <sub>L</sub>
S-I ILS		<b>216</b> (200-1.5)	1500 RVR	
S-I LOC		<b>600</b> (579-3.3)		
CIRCLING *	<b>790</b> (769-2.4)		<b>1000</b> (979-4.0)	<b>1000</b> (979-5.0)
ALTERNATE *	(1269-4.4)		(1479-6.0)	(1479-7.0)

Changes: NEW IAF ADDED, S-I MINIMA, CIRCLING and ALTERNATE minima, Editorial.

SSYII07-187