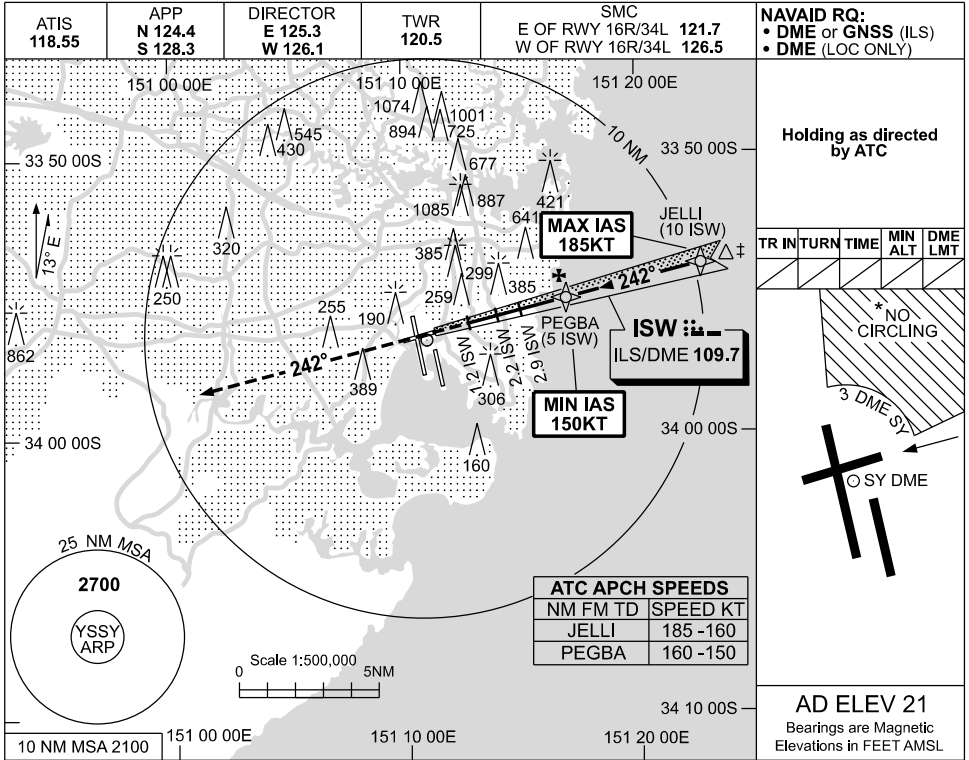


USE QNH

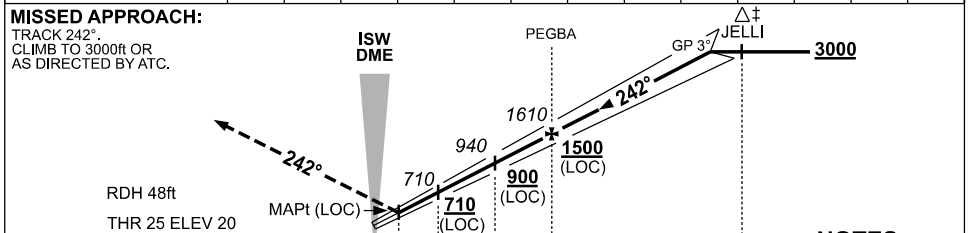
ILS or LOC RWY 25

09 JUL 2026

SYDNEY/KINGSFORD SMITH, NSW (YSSY)



NM TO ISW DME	1.8	2	2.2	2.9	4	5	6	7	8	9	9.4		
ALT (3° APCH PATH)	580	650	710	940	1290	1610	1920	2240	2560	2880	3000		



NM TO ISW DME	0	1.2	2.2	2.9	5	10
NM TO THR 25	0	2	2.8	4.8	9.8	

- NOTES**
- MAX IAS : JELLI : 185KT.
 - ACFT MAY BE RADAR VECTORED TO FNA.
 - NO CIRCLING BEYOND 3 DME SY EAST OF RWY 16R & NORTH OF RWY 25.
 - SPECIAL ALTN MNM 700/2.5KM. (NOT APPLICABLE TO LOC/DME).

CATEGORY	A	B	C	D/D _L
S-I ILS		230 (210-1.5)	1500 RVR	
S-I LOC		580 (559-3.2)		
CIRCLING*	790 (769-2.4)		1000 (979-4.0)	1000 (979-5.0)
ALTERNATE*	(1269-4.4)		(1479-6.0)	(1479-7.0)

Changes: SDF MOVED & MOCA LOWERED, CIRCLING & ALTERNATE MINIMA. SSYII06-187