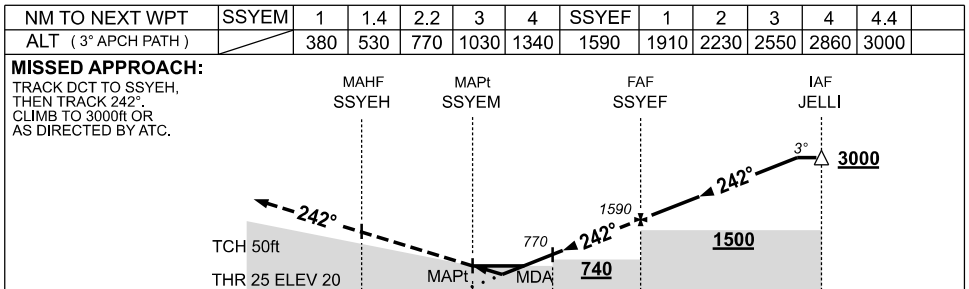
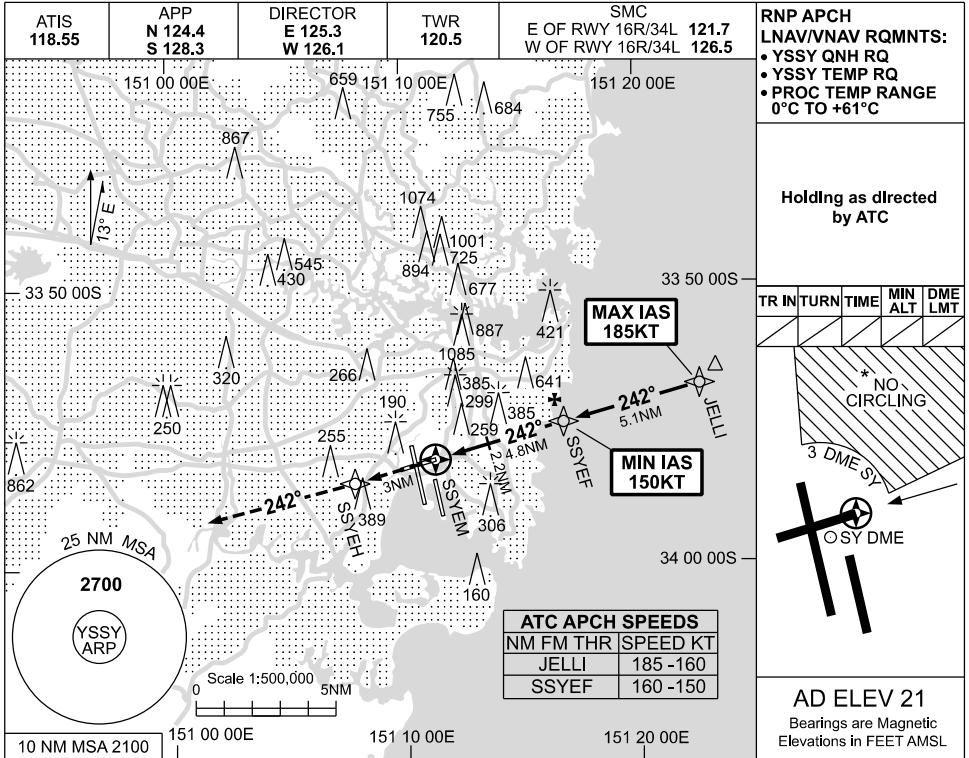


USE QNH

RNP RWY 25

09 JUL 2026

SYDNEY/KINGSFORD SMITH, NSW (YSSY)



NOTES

CATEGORY	A	B	C	D
LNAV/VNAV		380 (360-2.0)		
LNAV		530 (509-2.9)		
CIRCLING *	790 (769-2.4)		1000 (979-4.0)	1000 (979-5.0)
ALTERNATE	(1269-4.4)		(1479-6.0)	(1479-7.0)

1. MAX IAS:
JELLI : 185KT.
- * 2. NO CIRCLING BEYOND 3 DME SY EAST OF RWY 16R & NORTH OF RWY 25.

Changes: SDF, LNAV & LNAV/VNAV MINIMA, CIRCLING & ALTERNATE MINIMA.

SSYGN06-187