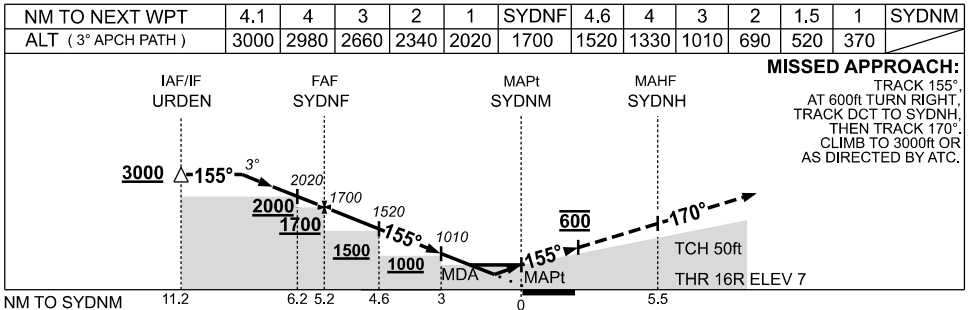
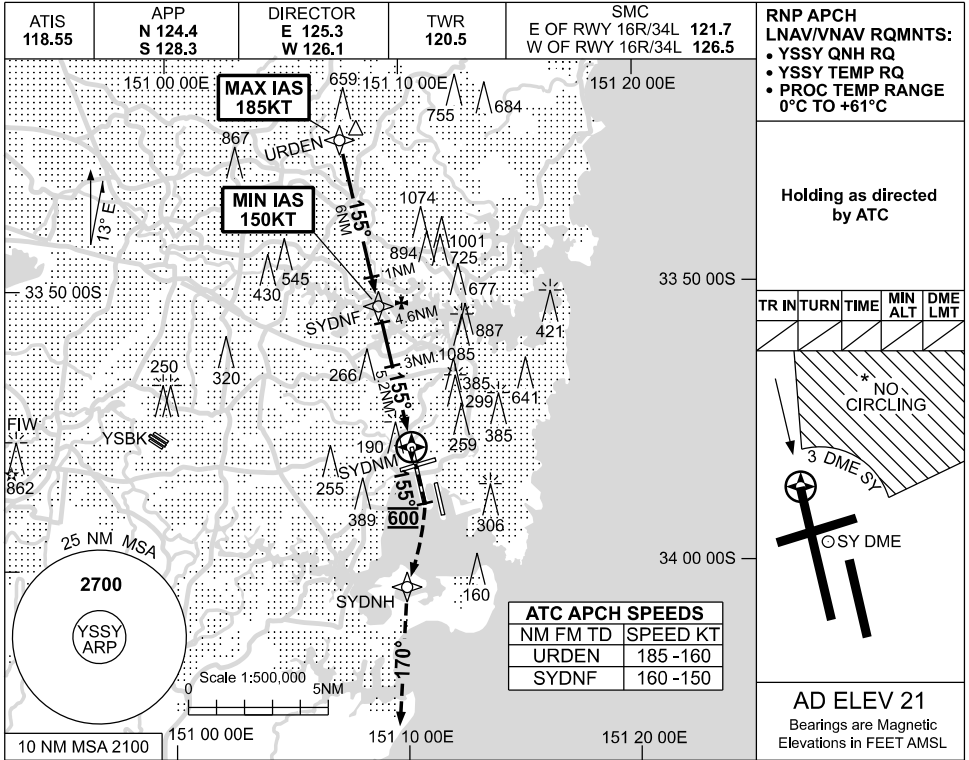


USE QNH

RNP RWY 16R

09 JUL 2026

SYDNEY/KINGSFORD SMITH, NSW (YSSY)



CATEGORY	A	B	C	D
LNAV/VNAV	370 (363-1.2)			
LNAV	520 (513-2.1)			
CIRCLING *	790 (769-2.4)	1000 (979-4.0)		1000 (979-5.0)
ALTERNATE	(1269-4.4)	(1479-6.0)		(1479-7.0)

- NOTES**
1. MAX IAS: URDN : 185KT. MISSED APCH to SYDNH: 200KT.
 - * 2. NO CIRCLING BEYOND 3 DME SY EAST OF RWY 16R & NORTH OF RWY 25.

Changes: SDF, CIRCLING and ALTERNATE minima.

SSYGN03-187