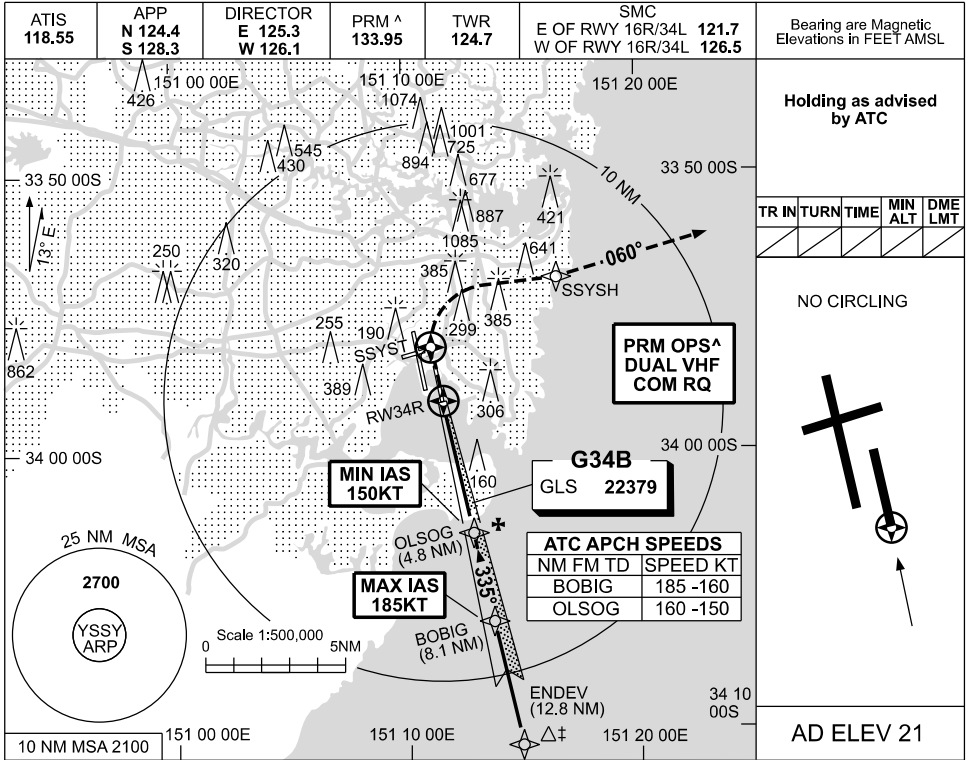
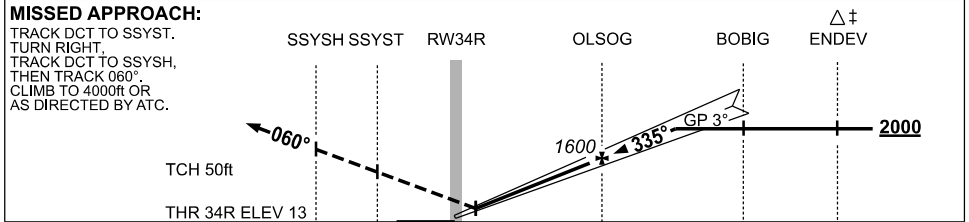


USE QNH GLS RWY 34R
SYDNEY/KINGSFORD SMITH, NSW (YSSY)

09 JUL 2026



NM TO RW34R	0.5	1	1.2	2	3	4	4.8	5	6.1				
ALT (3° APCH PATH)	220	380	460	700	1020	1340	1600	1660	2000				



CATEGORY	A	B	C	D
S-I GLS (4.8% MAP)		220 (207-1.2)	1000 RVR	
S-I GLS (2.5% MAP)		460 (447-2.2)		
CIRCLING		NOT AUTHORISED		
ALTERNATE	(1269-4.4)		(1479-6.0)	(1479-7.0)

NOTES

1. MAX IAS:
BOBIG: 185KT,
MAP UNTIL
SSYSH: 185KT.
2. ACFT MAY BE
RADAR VECTORED
TO FNA.
3. SIMULTANEOUS APCH
AUTHORISED WITH
RWY 34L. SEE PRM
USER INSTRUCTIONS
FOR ADDN RQMNTS.

Changes: ALTERNATE MINIMA. SSYGL06-187

CAUTION: CLOSELY SPACED PARALLEL RUNWAYS ^