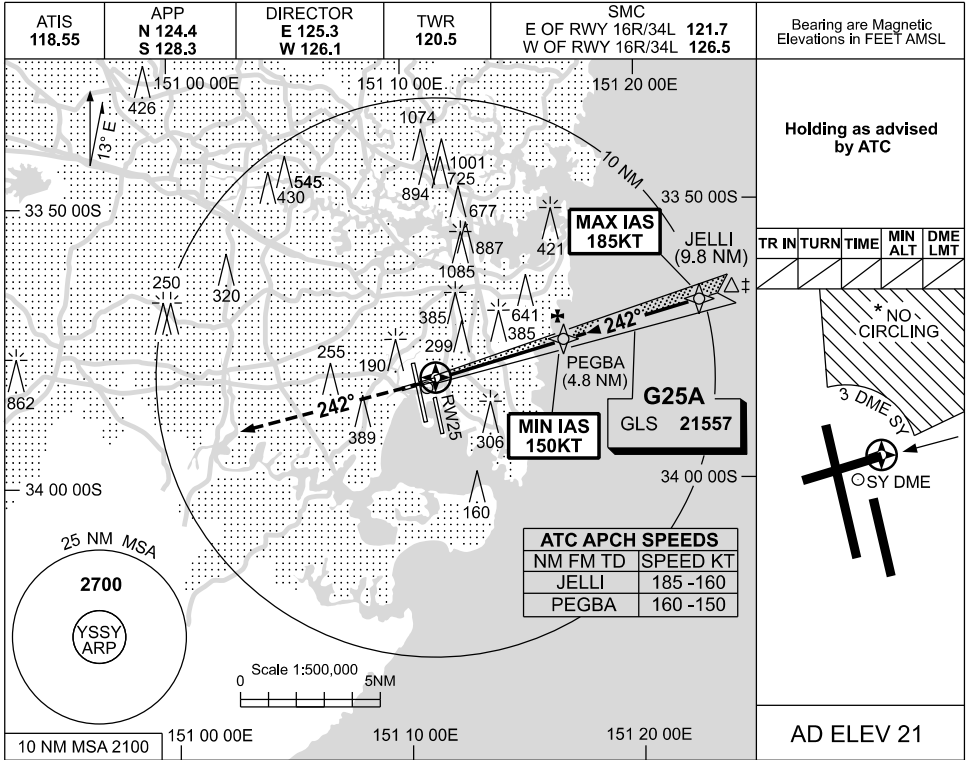
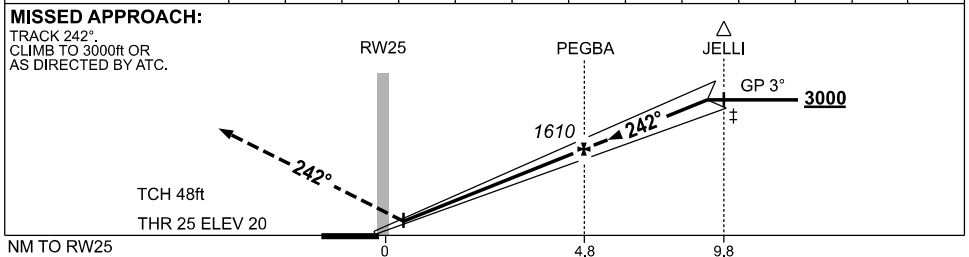


USE QNH **GLS RWY 25**
SYDNEY/KINGSFORD SMITH, NSW (YSSY)

09 JUL 2026



RW25 DIST	0.5	1	2	3	4	4.8	6	7	8	9	9.2		
ALT (3° APCH PATH)	230	390	700	1020	1340	1610	1980	2300	2620	2930	3000		



NOTES

1. MAX IAS :
JELLI : 185KT.
- * 2. NO CIRCLING
BEYOND 3 DME SY
EAST OF RWY 16R &
NORTH OF RWY 25.
- ‡ 3. ACFT MAY BE
RADAR VECTORED
TO FNA.

CATEGORY	A	B	C	D/DL
S-I GLS	230 (210-1.5) 1500 RVR			
CIRCLING *	790 (769-2.4)	1000 (979-4.0)	1000 (979-5.0)	
ALTERNATE	(1269-4.4)	(1479-6.0)	(1479-7.0)	

Changes: CIRCLING MINIMA, ALTERNATE MINIMA.

SSYGL04-187