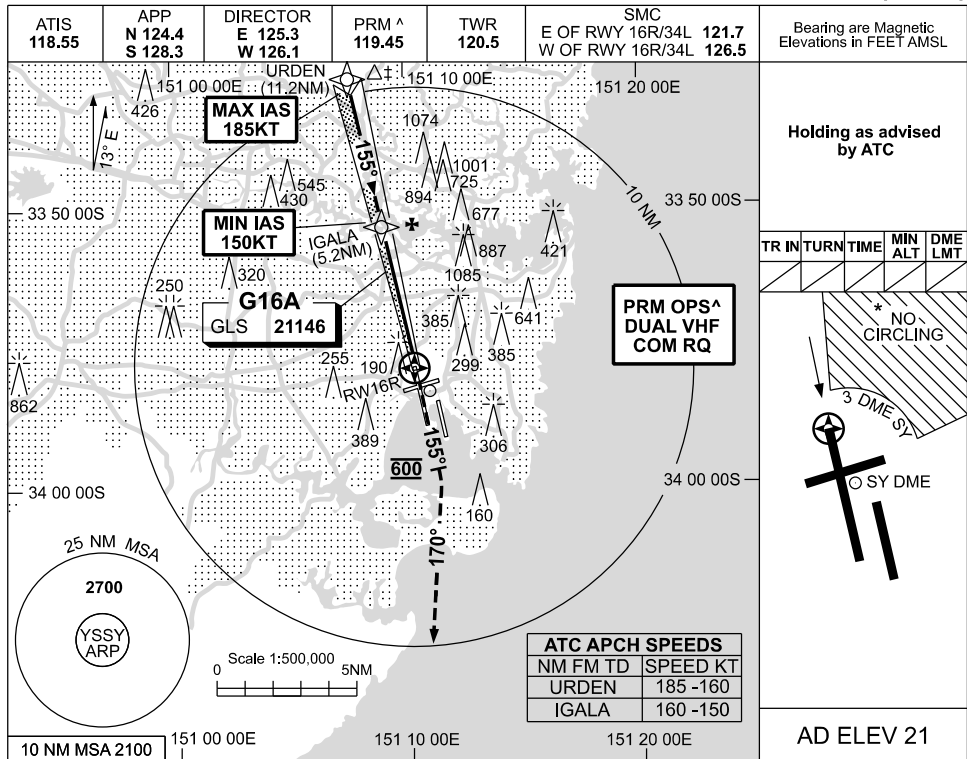
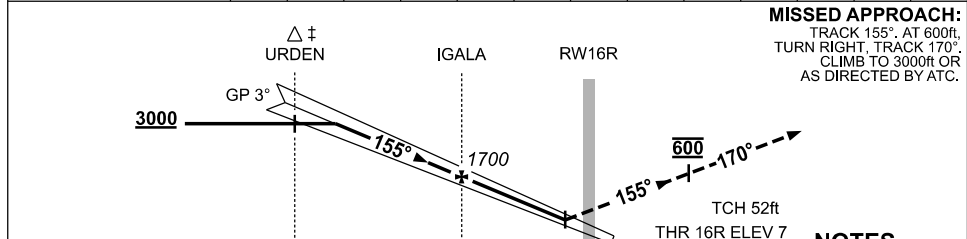


USE QNH GLS RWY 16R
SYDNEY/KINGSFORD SMITH, NSW (YSSY)

09 JUL 2026



RWY16R DIST	9.2	9	8	7	6	5.2	4	3	2	1	0.5		
ALT (3° APCH PATH)	3000	2920	2610	2290	1970	1700	1330	1010	700	380	210		



CATEGORY	A	B	C	D/D _L
S-I GLS		210 (203) 0.8		550RVR
CIRCLING *	790 (769-2.4)		1000 (979-4.0)	1000 (979-5.0)
ALTERNATE	(1269-4.4)		(1479-6.0)	(1479-7.0)

NOTES

- MAX IAS: URDEN : 185KT.
- ACFT MAY BE RADAR VECTORED TO FNA.
- SIMULTANEOUS APCH AUTHORISED WITH RWY 16L. SEE PRM USER INSTRUCTIONS FOR ADDN RQMNTS.
- NO CIRCLING BEYOND 3 DME SY EAST OF RWY 16R & NORTH OF RWY 25.

Changes: CIRCLING MINIMA, ALTERNATE MINIMA. SSYGL03-187

CAUTION: CLOSELY SPACED PARALLEL RUNWAYS ^