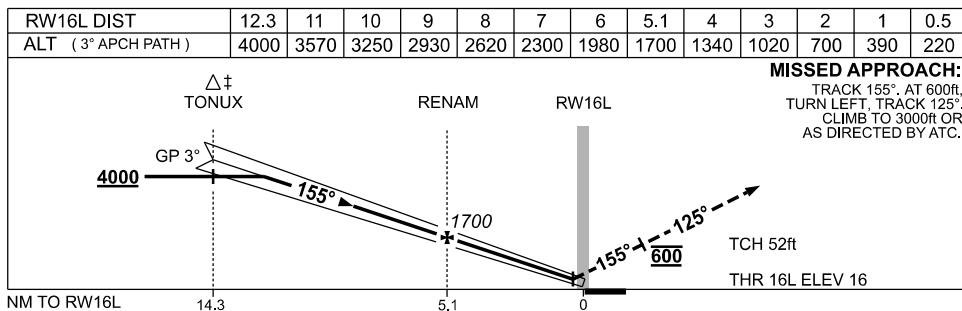
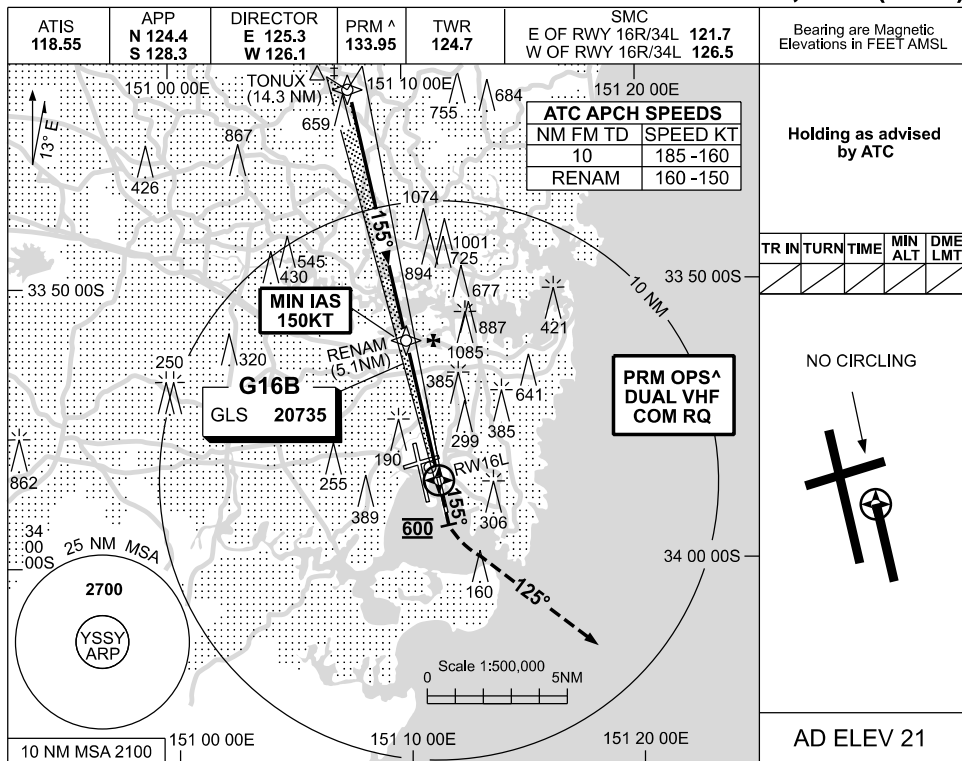


**USE QNH** GLS RWY 16L  
**SYDNEY/KINGSFORD SMITH, NSW (YSSY)**

**09 JUL 2026**



**NOTES**

CATEGORY	A	B	C	D
S-I GLS		220 (204) 0.8		550 RVR
CIRCLING	NOT AUTHORISED			
ALTERNATE	(1269-4.4)		(1479-6.0) (1479-7.0)	

‡ 1. ACFT MAY BE RADAR VECTORED TO FNA.  
 ^2. SIMULTANEOUS APCH AUTHORISED WITH RWY 16R. SEE PRM USER INSTRUCTIONS FOR ADDN RQMNTS.

Changes: ALTERNATE MINIMA.

SSYGL02-187

**CAUTION: CLOSELY SPACED PARALLEL RUNWAYS ^**