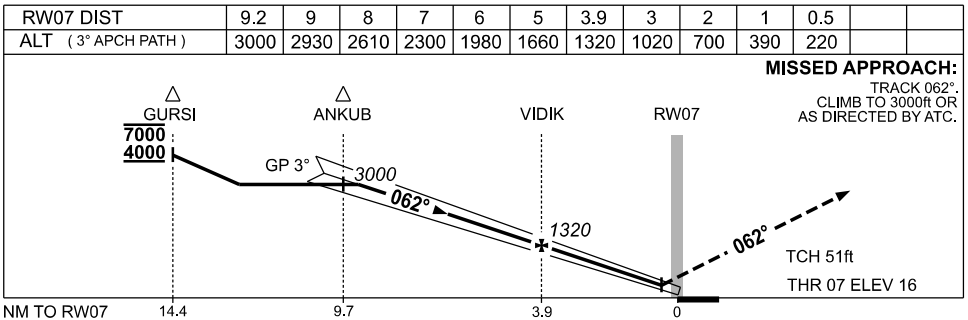
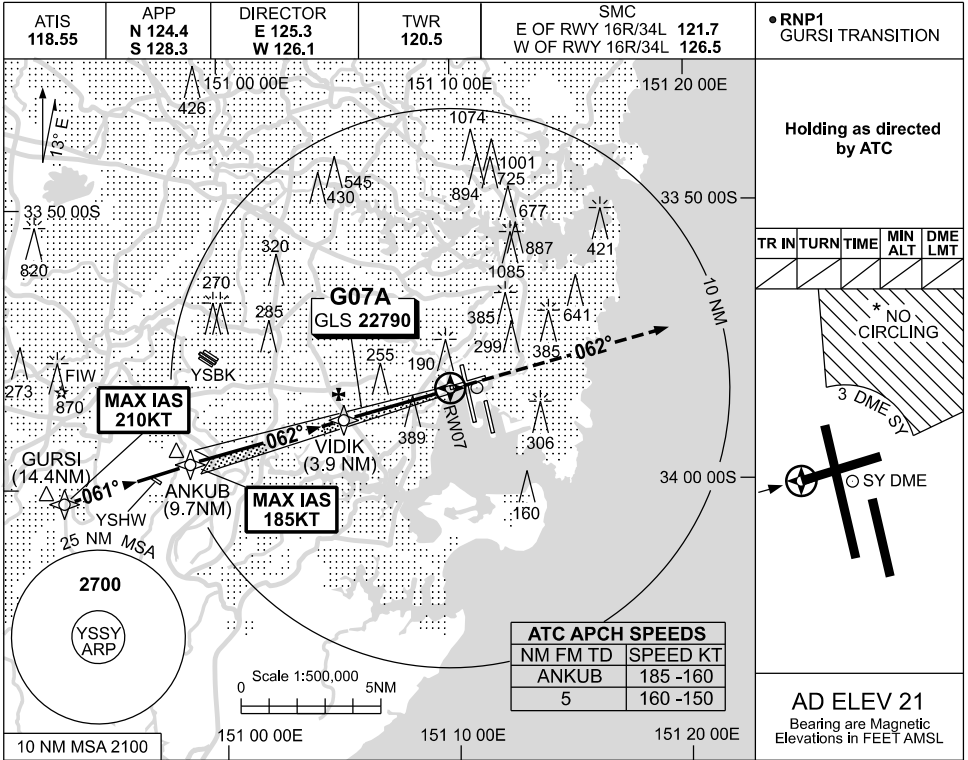


USE QNH GLS RWY 07
SYDNEY/KINGSFORD SMITH, NSW (YSSY)

09 JUL 2026



CATEGORY	A	B	C	D/D _L
S-I GLS	216 (200-1.5)			1500 RVR
CIRCLING *	790 (769-2.4)		1000 (979-4.0)	1000 (979-5.0)
ALTERNATE	(1269-4.4)		(1479-6.0)	(1479-7.0)

- NOTES**
- MAX IAS :
GURSI : 210KT.
ANKUB : 185KT.
 - NO CIRCLING
BEYOND 3 DME SY
EAST OF RWY 16R &
NORTH OF RWY 25.

Changes: NEW IAF ADDED, S-I GLS MINIMA, CIRCLING and ALTERNATE MINIMA, Editorial.

SSYGL01-187