

**STANDARD INSTRUMENT DEPARTURES (SID)  
RWY 16L ABBEY THREE (JET)(RNAV)  
SYDNEY/KINGSFORD SMITH, NSW (YSSY)**

**09 JUL 2026**

ATIS 118.55	ACD 133.8	SMC E OF RWY 16R/34L 121.7 W OF RWY 16R/34L 126.5	TWR 124.7	DEP(N) N&E 123.0	DEP(S) S,W&NW 129.7
----------------	--------------	---	--------------	---------------------	------------------------

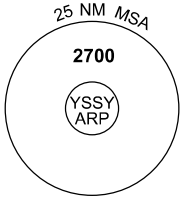
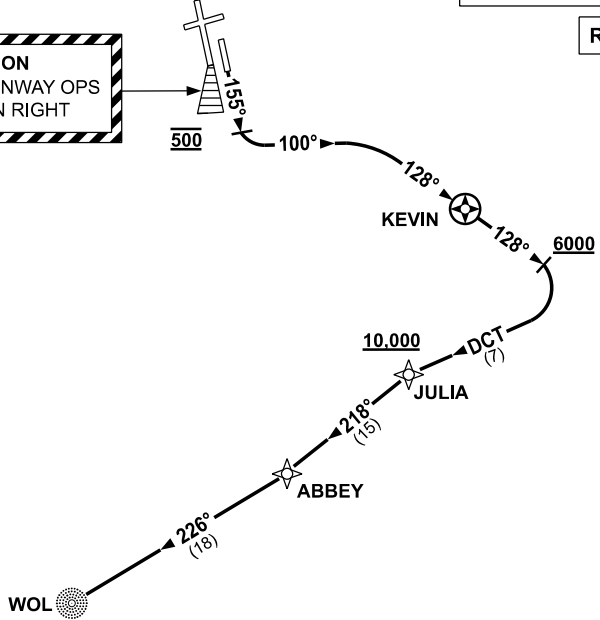
NOT TO SCALE



**SPEED  
MAX IAS 250KT  
BELOW 10,000ft**

**RNP1**

**CAUTION**  
PARALLEL RUNWAY OPS  
DO NOT TURN RIGHT



10 NM MSA 2100

**DEPARTURE:**

**ABBEY THREE**

**RWY 16L**

**CAUTION:** Parallel runway operations - DO NOT TURN RIGHT

- GRAD 3.3%
- Track 155°
- AT 500ft turn LEFT track 100° to intercept and track 128° to KEVIN
- AT or ABV 6000ft but not before KEVIN turn RIGHT track DCT to JULIA  
**Cross JULIA AT or ABV 10,000ft**
- Track 218° to ABBEY
- Turn RIGHT track 226° to WOL NDB, then as cleared

Changes: Editorial.

SSYDP15-187