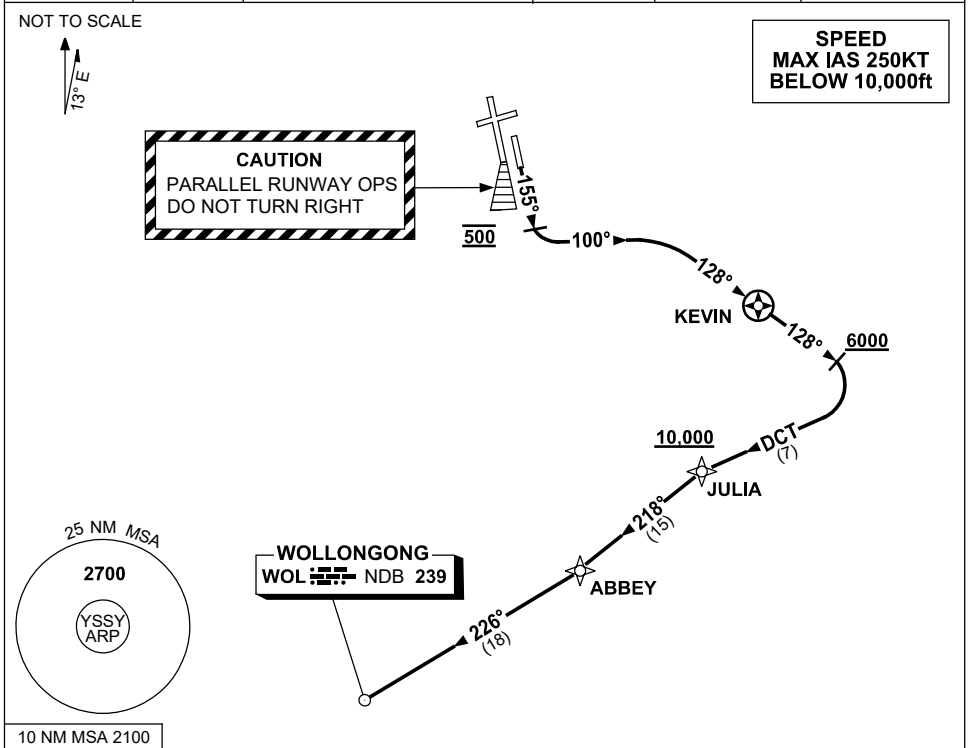


STANDARD INSTRUMENT DEPARTURES (SID) RWY 16L ABBEY THREE (JET)(RNAV) SYDNEY/KINGSFORD SMITH, NSW (YSSY)

12 JUN 2025

ATIS 118.55	ACD 133.8	SMC E OF RWY 16R/34L 121.7 W OF RWY 16R/34L 126.5	TWR 124.7	DEP(N) N&E 123.0	DEP(S) S,W&NW 129.7
----------------	--------------	---	--------------	---------------------	------------------------



DEPARTURE:

ABBIEY THREE

RWY 16L

CAUTION: Parallel runway operations - DO NOT TURN RIGHT

- GRAD 3.3% (4.7% to 1000ft)
- Track 155°
- AT 500ft turn LEFT track 100° to intercept and track 128° to KEVIN
- AT or ABV 6000ft but not before KEVIN turn RIGHT track DCT to JULIA
- **Cross JULIA AT or ABV 10,000ft**
- Track 218° to ABBIEY
- Turn RIGHT, track 226° to WOL NDB, thence as cleared