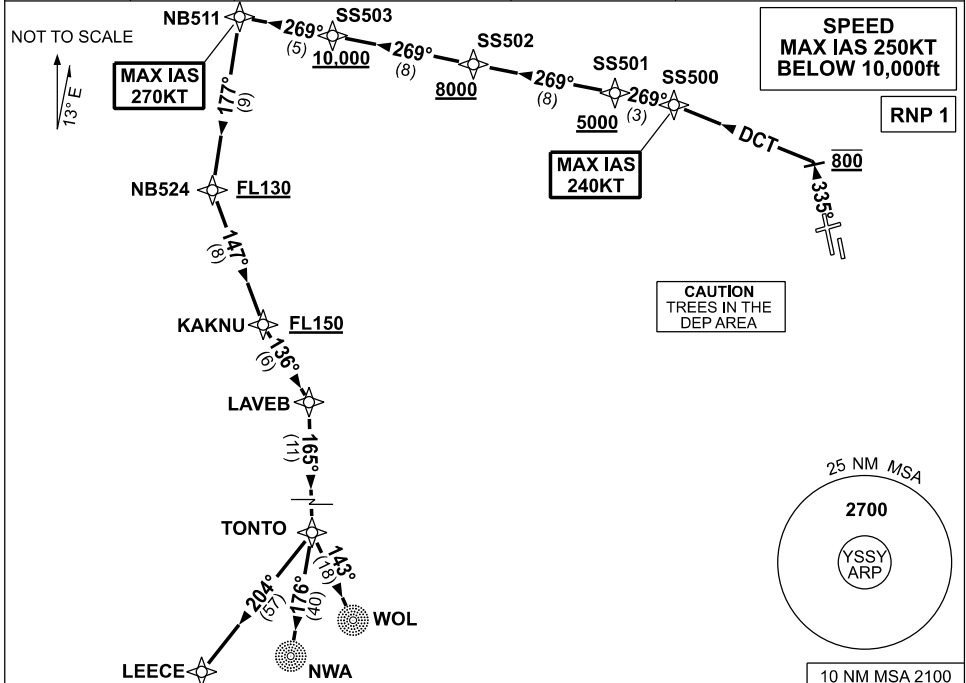


**STANDARD INSTRUMENT DEPARTURES (SID)
RWY 34L TONTO ONE DEPARTURE (RNAV)
SYDNEY/KINGSFORD SMITH, NSW (YSSY)**

09 JUL 2026

ATIS 118.55	ACD 133.8	SMC E OF RWY 16R/34L 121.7 W OF RWY 16R/34L 126.5	TWR 120.5	DEP 129.7 118.4
----------------	--------------	---	--------------	-----------------------



RWY 34L TONTO ONE DEPARTURE:

- GRAD 3.3%
- MAX IAS 240KT until SS500
- Track 335°
- AT 800ft turn LEFT, track DCT to SS500
MAX IAS 270KT until NB511
- Track 269° to SS501
Cross SS501 AT or ABV 5000ft
- Track 269° to SS502
Cross SS502 AT or ABV 8000ft
(RQ GRAD TO SS502: 6.0%)
- Track 269° to SS503
Cross SS503 AT or ABV 10,000ft
(RQ GRAD TO SS503: 4.3% FM SS502)
- Track 269° to NB511
- Turn LEFT, track 177° to NB524
Cross NB524 AT or ABV FL130
- Turn LEFT, track 147° to KAKNU
Cross KAKNU AT or ABV FL150
(RQ GRAD TO KAKNU: 3.7% FM SS503)
- Turn LEFT, track 136° to LAVEB
- Turn RIGHT, track 165° to TONTO

TRANSITIONS:

- WOLLONGONG (WOL)** • From TONTO, turn LEFT, track 143° to WOL NDB
- NOWRA (NWA)** • From TONTO, turn RIGHT, track 176° to NWA NDB
- LEECE** • From TONTO, turn RIGHT, track 204° to LEECE

Changes: NEW PROCEDURE.

SSYDP14-187