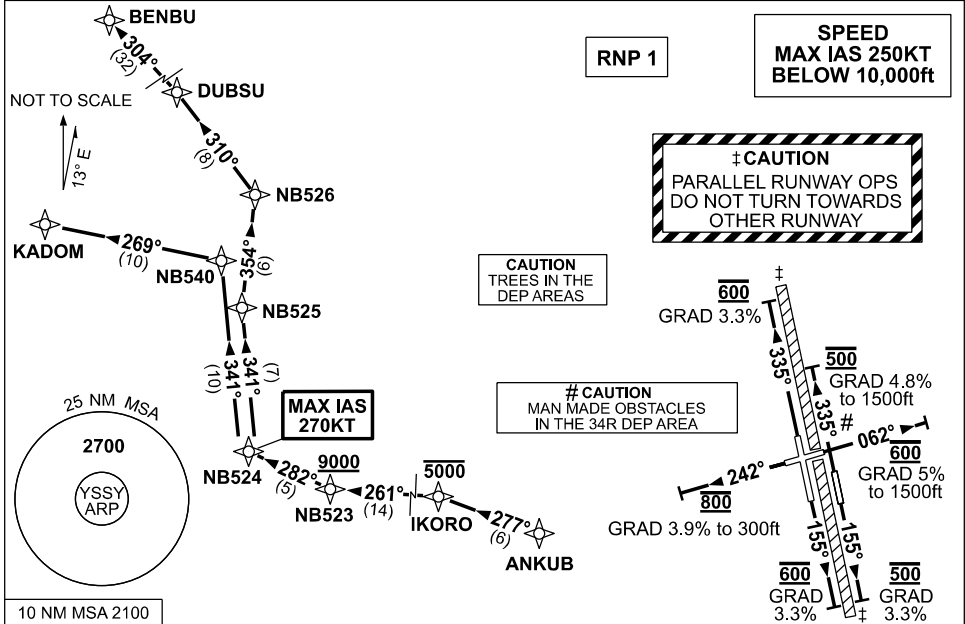


# STANDARD INSTRUMENT DEPARTURES (SID) ANKUB ONE DEPTURE (NON-JET) (RNAV) SYDNEY/KINGSFORD SMITH, NSW (YSSY)

09 JUL 2026

ATIS 118.55	ACD 133.8	SMC E OF RWY 16R/34L 121.7 W OF RWY 16R/34L 126.5	TWR 120.5	DEP(S) S,W&NW 129.7 118.4
----------------	--------------	---	--------------	------------------------------



**DEPARTURE: ANKUB ONE (NON-JET)**

- |   |  |
|---|--|
| <p><b>RWY 07</b></p> <p><b>RWY 25</b></p> <p><b>RWY 16R</b></p> | <p>GRAD 5% to 1500ft, then 3.3%<br/>MAX IAS 270KT until NB524</p> <ul style="list-style-type: none"> <li>• Track 062°</li> <li>• AT 600ft, turn to assigned heading or track</li> <li>• Expect radar vectors to ANKUB</li> </ul> <p>GRAD 3.9% to 300ft, then 3.3%<br/>MAX IAS 270KT until NB524</p> <ul style="list-style-type: none"> <li>• Track 242°</li> <li>• AT 800ft, turn to assigned heading or track</li> <li>• Expect radar vectors to ANKUB</li> </ul> <p>GRAD 3.3%<br/>MAX IAS 270KT until NB524</p> <ul style="list-style-type: none"> <li>• Track 155°</li> <li>• AT 600ft, turn to assigned heading or track</li> <li>• Expect radar vectors to ANKUB</li> </ul> |
|---|--|

- |   |   |
|---|---|
| <p><b>RWY 16L</b></p> <p><b>RWY 34R</b></p> <p><b>RWY 34L</b></p> | <p>GRAD 3.3%<br/>MAX IAS 270KT until NB524</p> <ul style="list-style-type: none"> <li>• Track 155°</li> <li>• AT 500ft, turn to assigned heading or track</li> <li>• Expect radar vectors to ANKUB</li> </ul> <p>GRAD 4.8% to 1500ft, then 3.3%<br/>MAX IAS 270KT until NB524</p> <ul style="list-style-type: none"> <li>• Track 335</li> <li>• AT 500ft, turn to assigned heading or track</li> <li>• Expect radar vectors to ANKUB</li> </ul> <p>GRAD 3.3%<br/>MAX IAS 270KT until NB524</p> <ul style="list-style-type: none"> <li>• Track 335°</li> <li>• AT 600ft, turn to assigned heading or track</li> <li>• Expect radar vectors to ANKUB</li> </ul> |
|---|---|

**TRANSITIONS:**

- KADOM**
- MAX IAS 270KT until NB524
  - From ANKUB, track 277° to IKORO  
**Cross** IKORO AT or BLW 5000ft
  - Track 261° to NB523  
**Cross** NB523 AT or ABV 9000ft (RQ GRAD to NB523: 4.9% FM IKORO)
  - Turn RIGHT, track 282° to NB524
  - Turn RIGHT, track 341° to NB540
  - Turn LEFT, track 269° to KADOM

- BENBU**
- MAX IAS 270KT until NB524
  - From ANKUB, track 277° to IKORO  
**Cross** IKORO AT or BLW 5000ft
  - Turn LEFT, track 261° to NB523  
**Cross** NB523 AT or ABV 9000ft (RQ GRAD to NB523: 4.9% FM IKORO)
  - Turn RIGHT, track 282° to NB524
  - Turn RIGHT, track 341° to NB525
  - Turn RIGHT, track 354° to NB526
  - Turn LEFT, track 310° to DUBSU
  - Turn LEFT, track 304° to BENBU

Changes: NEW PROC.

SSYDP13-187