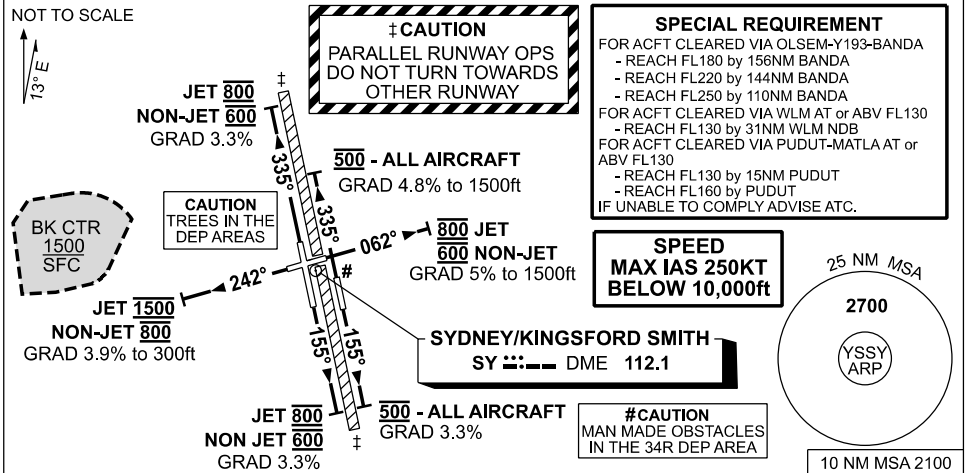


**STANDARD INSTRUMENT DEPARTURES (SID)
SYDNEY FOUR DEPARTURE (RADAR)
SYDNEY/KINGSFORD SMITH, NSW (YSSY)**

09 JUL 2026

ATIS 118.55	ACD 133.8	SMC E OF RWY 16R/34L 121.7 W OF RWY 16R/34L 126.5	TWR RWY 16R/34L,07/25 120.5 RWY 16L/34R 124.7	DEP(N) N&E 123.0	DEP(S) S,W&NW 129.7
-----------------------	---------------------	---	---	----------------------------	-------------------------------



SYDNEY FOUR DEPARTURE (RADAR)

RWY 07

- GRAD 5% to 1500ft, then 3.3%
- Track 062°
- AT 600ft (800ft **Jet ACFT**) turn to assigned heading or track
- Expect radar vectors
- ACFT cleared via OLSEM, WLM or MATLA see SPECIAL REQUIREMENT above

RWY 16R

- GRAD 3.3%
- Track 155°
- AT 600ft (800ft **Jet ACFT**) turn to assigned heading or track
- Expect radar vectors
- ACFT cleared via OLSEM, WLM or MATLA see SPECIAL REQUIREMENT above

RWY 16L

- GRAD 3.3%
- Track 155°
- AT 500ft turn to assigned heading or track
- Expect radar vectors
- ACFT cleared via OLSEM, WLM or MATLA see SPECIAL REQUIREMENT above

RWY 25

- GRAD 3.9% to 300ft, then 3.3%
- Track 242°
- AT 800ft (NOT BEFORE 1500ft **Jet ACFT**), turn to assigned heading or track
- Expect radar vectors
- ACFT cleared via OLSEM, WLM or MATLA see SPECIAL REQUIREMENT above

RWY 34R #

- GRAD 4.8% to 1500ft, then 3.3%
- Track 335°
- AT 500ft turn to assigned heading or track
- Expect radar vectors
- ACFT cleared via OLSEM, WLM or MATLA see SPECIAL REQUIREMENT above

RWY 34L

- GRAD 3.3%
- Track 335°
- AT 600ft (800ft **Jet ACFT**) turn to assigned heading or track (NO RIGHT TURN BLW 1500ft)
- Expect radar vectors
- ACFT cleared via OLSEM, WLM or MATLA see SPECIAL REQUIREMENT above

COMMUNICATIONS FAILURE PROCEDURE

- On recognition of communication failure.
- Squawk 7600
- Maintain last assigned vector for two minutes and, if necessary, climb to minimum safe altitude to maintain terrain clearance, then
- Proceed in accordance with the latest ATC route clearance acknowledged.

Changes: GRAD, CAUTION NOTES, Editorial.

SSYDP12-187